

2015 INTERNATIONAL
TERRASTAR
OSAGE “2168 SUPER WARRIOR” TYPE I
STANDARD FEATURES

• CERTIFIED KKK-1822-F • MEMBER AMD •

CHASSIS

- 2016 International Terrastar 4 x 2
- 183” Wheel Base w/ Dual Rear Wheels
- GVWR: 19,000 LBS
- 12,000 LBS OEM Rear Air Suspension w/ Dual Leveling Valves and Kneeling Feature
- International Maxxforce 7 300 HP Turbo Diesel w/ Block Heater Wired to the Shoreline
- International Engine Speed Control Unit
- Allison 1000 EVS 5 Speed w/ Overdrive Automatic Transmission w/ Park Pawl
- IROS Air Ride Suspension w/ Rear Kneeling Feature
- Locking No-Spin Differential
- Air Activated Park Brake Engaged When Shifter Placed in Park Position
- 4 - Wheel Disc Brakes w/ ABS
- Auxiliary A/C Compressor
- Stainless Steel Wheel Inserts
- Polished Aluminum Diamond Plate Step Well & Fuel Tank Covers & Rear Mud Flaps
- Dual Grover Stutter Tone Air Horns
- Premium Interior Trim Package
- Dual Map Lights
- Tilt Steering Wheel & Cruise Control
- Electric Windows & Door Locks
- AM/FM Stereo Weather Radio
- Deluxe Cloth High Back Air Ride Seats
- OEM Heated Mirrors with Power Adjust
- Daytime Running Lights

MODULE

- Module Dimensions: 168”L x 91”H x 96” W
- Double Step @ Curb Side Entry Door
- **Totally “Seamless” Body Construction**
- Exterior Side & Roof Panels .125” Aluminum
- One-Piece Exterior Side Panels
- One-Piece Crowned Roof
- Frame Members 2” x 2” Aluminum Tubing
- Frame Members on 12” Centers
- Diamond Plate Shields:
 - * Across Lower Rear of Body
 - * Across Lower Front of Body
 - * Lower 1/3 of Entry Doors
- All Body Openings “Seamless”
- All Exterior Doors “Pan-Formed” / Extruded Double Break Construction
- All Door Latches Mounted Behind Gaskets
- Exterior Compartment @ Front Left for Storage of Oxygen Tank and Back Boards
- Curbside Back Board Storage
- Exterior Compartment Adjustable Shelving
- Exterior Compartment Lighting
- Cast “Grabber” Door Holders
- Lower Body Impact Rub Rails
- Polished Stainless Steel Fenderettes
- Grip Strut Rear Step Bumper w/ 4” x 18” Dock Bumpers
- Automotive Undercoating

WARNING SYSTEM

- Two Red Whelen 7x3 Lights Mounted in Grill
- Two Red Whelen 7x3 LED Intersection Lights Mounted in the Front Fenders
- Eight Red LED Whelen 9x7 Modular Lights
- One Clear LED Whelen 9x7 Front Modular Light
- One Amber LED Whelen 9x7 Rear Modular Light
- Two Optic Whelen 9x7 Scene Lights Per Side
- Two Optic Whelen 9x7 Rear Load Lights
- Primary / Secondary Switching
- Carson SA 400 Siren w/ Dual Whelen “Navistar Underpro Series” Siren Speakers
- Siren / Horn Switch
- Dual Air Horn Switching, in Steering Wheel for Driver, in Instrument Panel for Passenger
- Rear DOT Lighting Whelen LED 4x6 w/ Chrome Flanges: Red Tail / Brake, Amber Arrow Turn.
- Reverse is Halogen
- LED Clearance / Marker Lights

PAINT & MARKINGS

- 8" Belt Line Paint Stripe
- Base Coat / Clear Coat Modular Paint
- "No Smoking" & "Fasten Seat Belt" Signs
- Ambulance / Star-of-Life Decals

ELECTRICAL

- OEM 320 Amp Alternator
- Digital Voltmeter
- Audible Low-Voltage Alarm
- Bosch, Vanner, Cole-Herse & Wired-Rite Components
- Printed Circuit Board w/ Load Management & Sequencing System
- LED Diagnostic System
- Wiring Color-Coded and Heat Embossed Every 6" w/ Function
- Power Distribution Panel Easily Accessible Via Hinged Access Door in Action Area
- Front Switch Console
- Hinge Mounted Attendant Switch Console
- Control Console Backlighting Dimmer
- OEM Electrical Battery Switch Mounted on Cab Floor to Left of Driver's Seat
- Three OEM Batteries Mounted in Slide Out Tray Behind Drivers Entry Step
- Open Door Warning Light
- Three Light Silent Intercom
- Hand Held 300,000 CP Spotlight
- Whelen Dual Intensity LED Patient Compartment Dome Lights
- Exterior Weatherproof Shoreline Receptacle
- Two Interior 110V Duplex Receptacles
- Two Interior 12V Cigar Style Receptacles
- One Pre-Wire Antenna Cable
- Electrical Back-up Alarm w/ Auto Re-set

INTERIOR

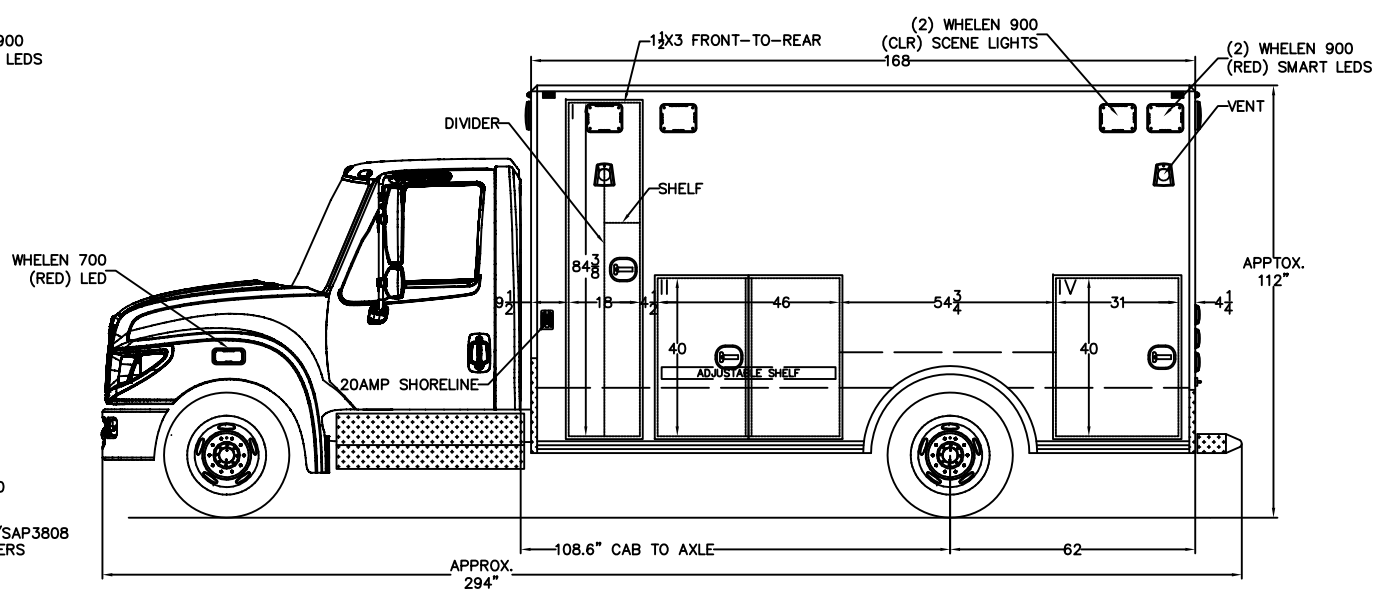
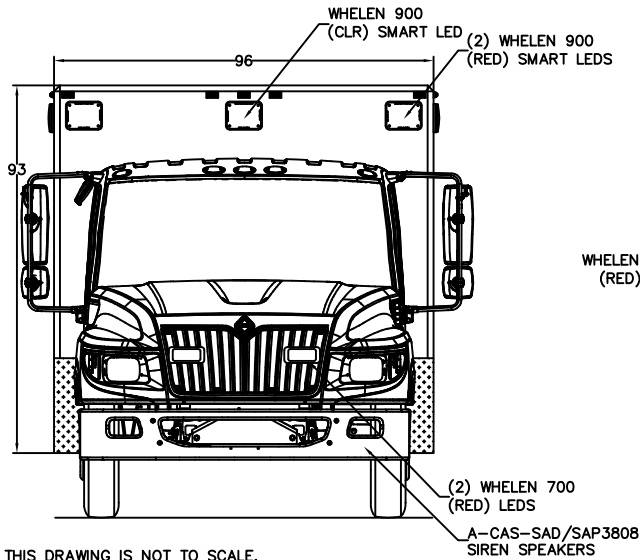
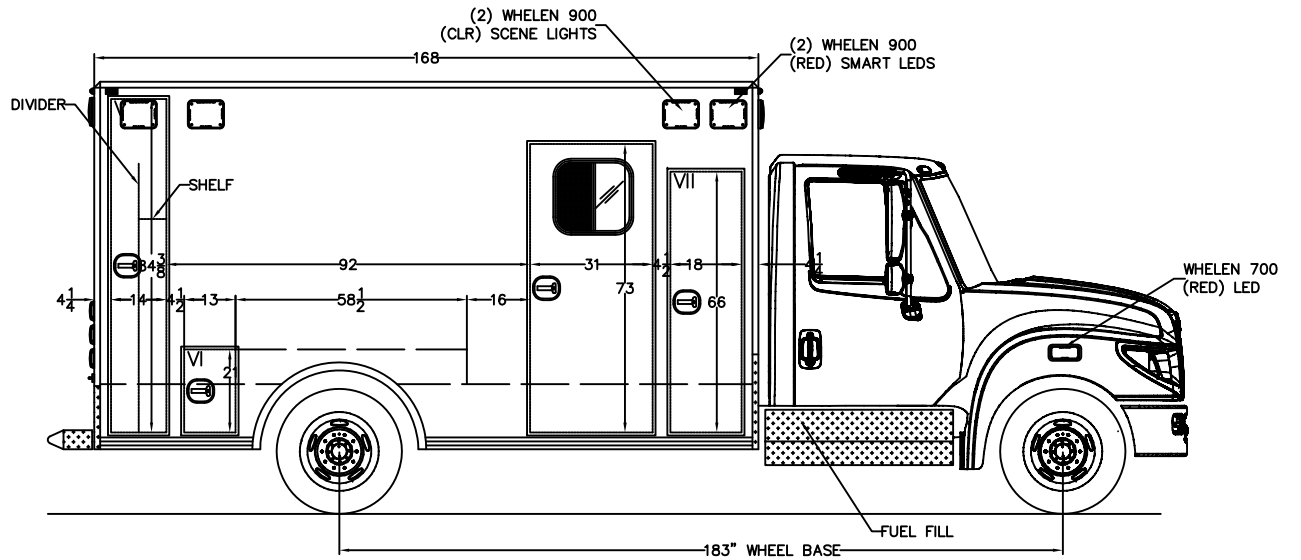
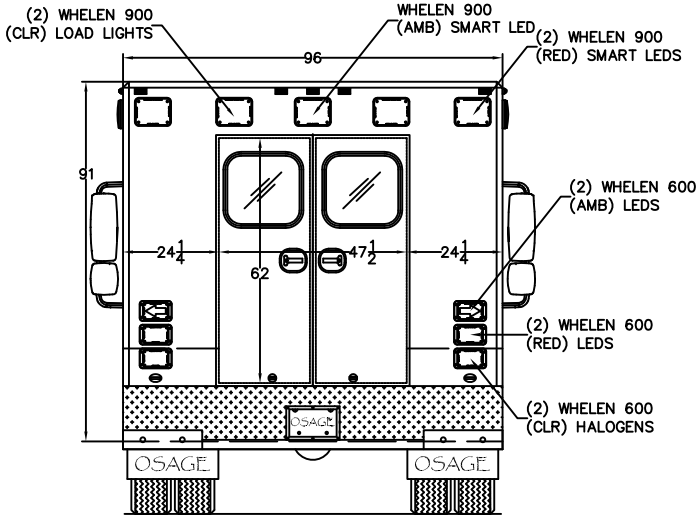
- 72" Interior Headroom
- 46" Aisle Width
- All Vertical Corners 1" Radii
- Stainless Steel Aisle Panel, Left Side, Full Length x 18" x .060"
- Lon Plate Vinyl Flooring Rolled 3" Up Both Sides of Aisle
- EMT Seat, Pedestal Mounted Deluxe **Seamless** Vinyl Captains Chair
- CPR Seat, three piece, molded, contoured cushions
- Squad Bench
- Retractable Seat Belts for All Locations
- Handicap Style, 1 ½" Diameter, Full Length, Stainless Steel Overhead Grab Rail. This Rail shall be treated with Agion Anti-Bacterial Coating.
- Handicap Style, 1 ½" Diameter, Stainless Steel Door Pulls on Patient Compartment Doors. These Bars shall be treated with Agion Anti-Bacterial Coating.
- Sliding "Pass-thru" Window Between Cab and Patient Compartment
- Padded Bulk-Head Cabinet Doors
- ALS Compartment w/ In/Out Access
- R-29 Reflectics Insulation Throughout Module
- Thermostatically Controlled Patient Compartment Heat & Cool System
- 3-Speed Manual Fan Control
- Rear Heat & Cool Unit Mounted Floor Level;
 - * Moisture Drains Directly Through Floor
 - * Short Coolant Circulation Distance
 - * Eliminates Vertical Circulation of Coolant
 - * Unit Easily Accessible for Maintenance
- Auxiliary External A/C Condenser
- Overhead Air Distribution w/ Floor Level Filtered Air Return for Optimum Circulation
- Two Recessed, Swing-up Dual IV Hangers
- "Zico" Retaining Bracket for Oxygen "M" Cyl
- Three "Ohio" Oxygen Outlets
- Impact #324 Self-Contained Suction System
- Locking Sharps Container (Shipped Loose)
- Locking Drug Compartment
- Clock w/ Sweep Second Hand
- Ferno Washington Model 175-4 Cot Fastener
- **Seamless Seat Cushions**

WARRANTY

- Three Year / 36,000 Mile Product Conversion
- Five Year / 100,000 Mile (**Non Pro-rated**) Modular Paint
 - Six Year / 72,000 Mile Electrical System
 - Lifetime Modular Body Structure

NOTE: See Warranty Certificate for Details

OSAGE AMBULANCE • P.O. BOX 718 • LINN, MO. 65051
800-822-3634 • FAX: 573-897-3113
• www.osageambulances.com



NOTES: THIS DRAWING IS NOT TO SCALE. CHARACTERISTICS AND DIMENSIONS OF FINISHED PRODUCT MAY VARY.

- NOTES:
- 1.) COMPARTMENT DIMENSIONS REFLECT OPENING CLEARANCE.
 - 2.) APPROXIMATE COMPARTMENT DEPTH=21"DEEP.
 - 3.) MODULE DIMENSIONS=168"L x 96"W x 93"H.
 - 4.) INTERIOR MODULE HEAD ROOM=72"H.
 - 5.) ALL 9x7 LIGHTS TO BE WHELEN 900 SERIES LIGHTS.
 - 6.) DOUBLE STAINLESS THRESHOLDS.
 - 7.) STYROFOAM INSULATION, WALLS & CEILING.

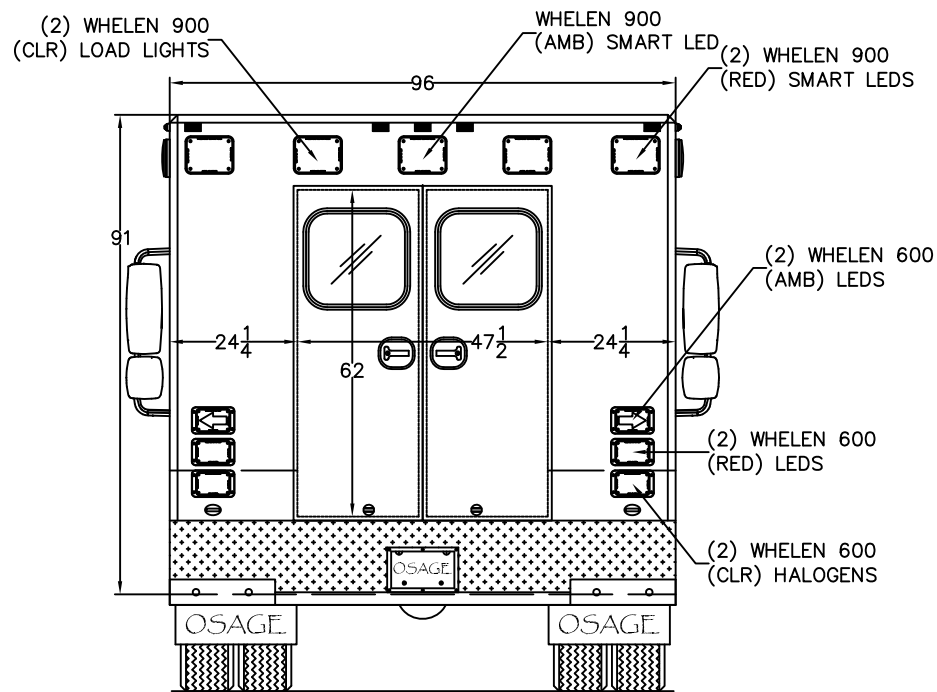
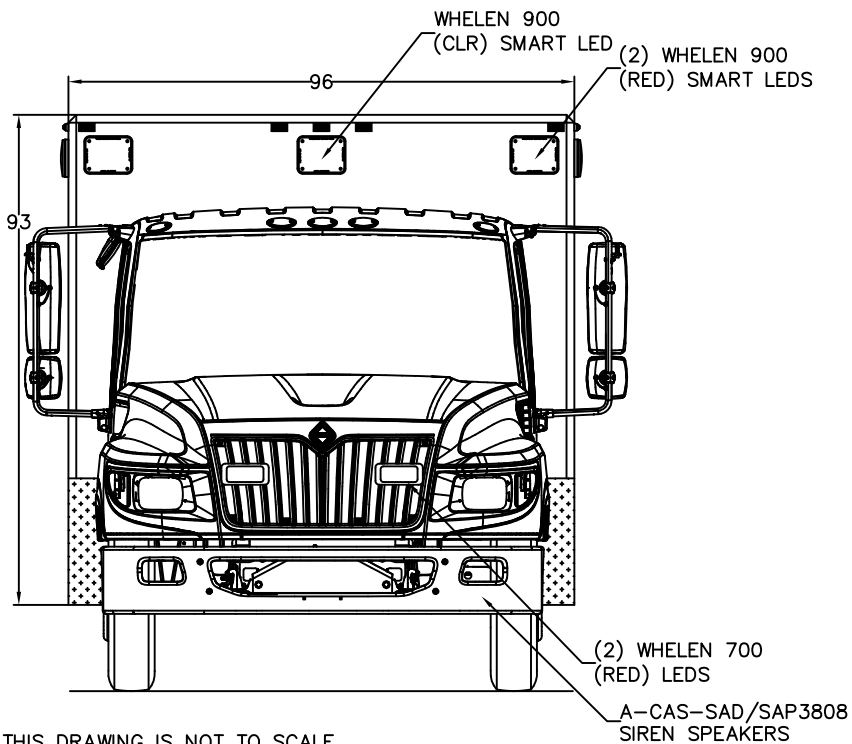
Stock/Job#:	Drawing# 15-1-2168-SW-100	Cust. App'v/Date#	Deal'r App'v/Date:
-------------	------------------------------	-------------------	--------------------

Osage Dealer:	<h1 style="text-align: center;">Osage Industries, Inc.</h1> <p style="text-align: center;">TWIN RIDGE ROAD P.O. BOX 718 LINN, MO. 65051</p>		
End Customer:			

NOTICE		Drawn By: S.A.H.	Date: 09-15-14	Scale: NOT TO SCALE
---------------	--	---------------------	-------------------	------------------------

This drawing and/or the information hereon is the exclusive property of Osage Industries and shall not be reproduced, used or disclosed without the authorized written consent of Osage Industries.		Drawing Description: <h2 style="text-align: center;">EXTERIOR LAYOUT, TERRA STAR TYPE-I (SUPER-WARRIOR)</h2>	Revision# <h1 style="text-align: center;">1</h1>

Rev.#	Revision Description	Date	Rev'd	App'vd
3				
2				
1				

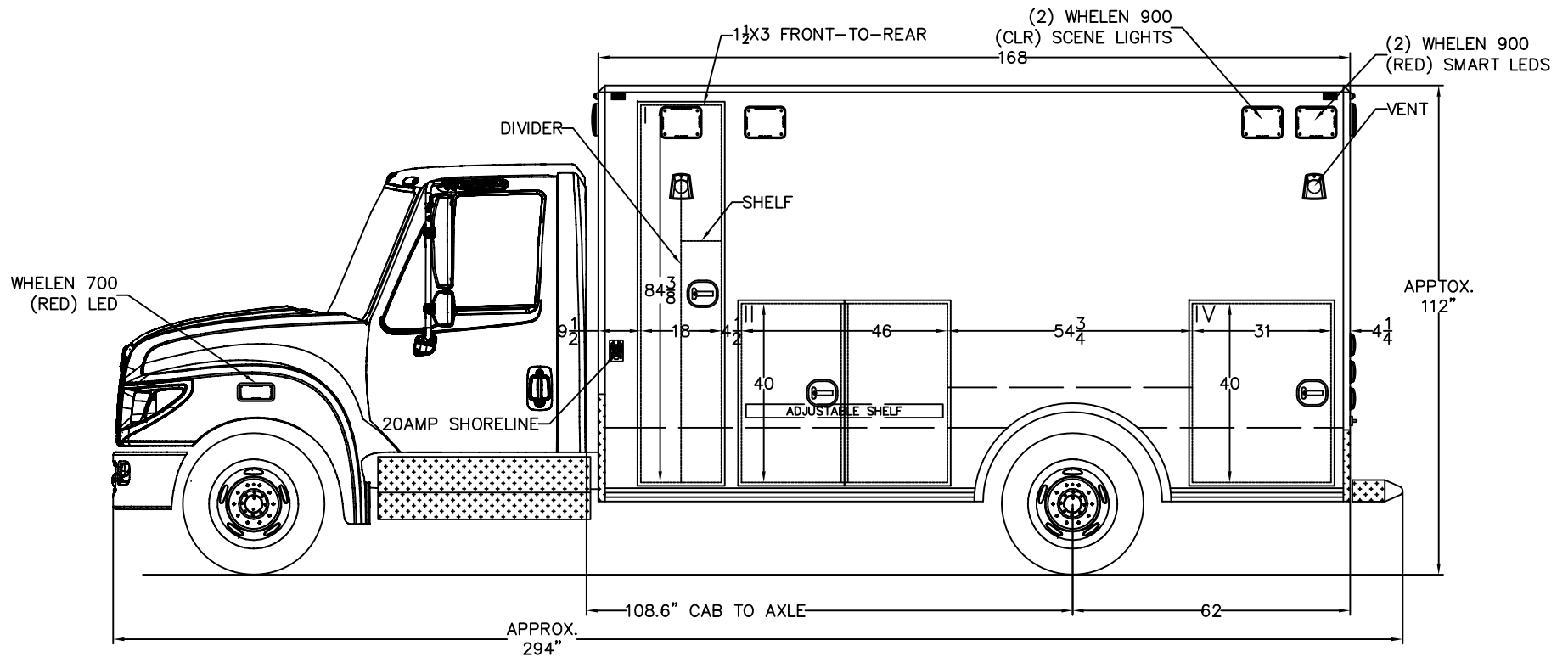


NOTES: THIS DRAWING IS NOT TO SCALE.
CHARACTERISTICS AND DIMENSIONS OF FINISHED PRODUCT MAY VARY.

- NOTES:
- 1.) COMPARTMENT DIMENSIONS REFLECT OPENING CLEARANCE.
 - 2.) APPROXIMATE COMPARTMENT DEPTH=21"DEEP.
 - 3.) MODULE DIMENSIONS=168"L x 96"W x 93"H.
 - 4.) INTERIOR MODULE HEAD ROOM=72"H.
 - 5.) ALL 9x7 LIGHTS TO BE WHELEN 900 SERIES LIGHTS.
 - 6.) DOUBLE STAINLESS THRESHOLDS.
 - 7.) STYROFOAM INSULATION, WALLS & CEILING.

Stock/Job#:	Drawing# 15-1-2168-SW-100	Cust. App'v/Date#	Deal'r App'v/Date:
Osage Dealer:	<h1 style="margin: 0;">Osage Industries, Inc.</h1> <p style="margin: 0;">TWIN RIDGE ROAD P.O. BOX 718 LINN, MO. 65051</p>		
End Customer:			
NOTICE		Drawn By: S.A.H.	Date: 09-15-14
This drawing and/or the information hereon is the exclusive property of Osage Industries and shall not be reproduced, used or disclosed without the authorized written consent of Osage Industries.		Drawing Description: EXTERIOR LAYOUT, FRONT/REAR TERRA STAR TYPE-I (SUPER-WARRIOR)	
		Scale: NOT TO SCALE	
Rev.#	Revision Description	Date	Rev'd App'vd

Revision#
1



NOTES: THIS DRAWING IS NOT TO SCALE.
 CHARACTERISTICS AND DIMENSIONS OF FINISHED PRODUCT MAY VARY.

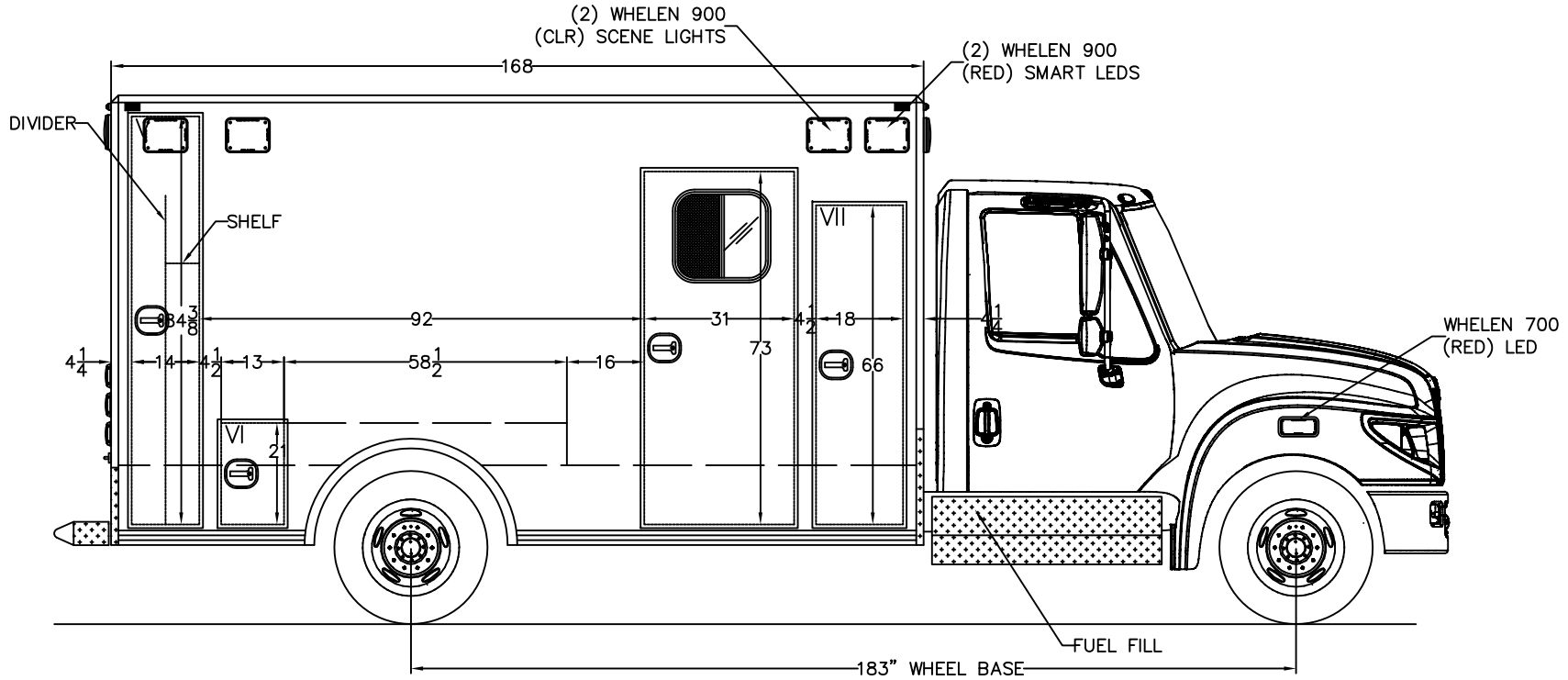
NOTES:

- 1.) COMPARTMENT DIMENSIONS REFLECT OPENING CLEARANCE.
- 2.) APPROXIMATE COMPARTMENT DEPTH=21"DEEP.
- 3.) MODULE DIMENSIONS=168"L x 96"W x 93"H.
- 4.) INTERIOR MODULE HEAD ROOM=72"H.
- 5.) ALL 9x7 LIGHTS TO BE WHELEN 900 SERIES LIGHTS.
- 6.) DOUBLE STAINLESS THRESHOLDS.
- 7.) STYROFOAM INSULATION, WALLS & CEILING.

Stock/Job#:	Drawing# 15-1-2168-SW-100	Cust. App'v/Date#	Deal'r App'v/Date:
Osage Dealer:	<h1 style="margin: 0;">Osage Industries, Inc.</h1> <p style="margin: 0;">TWIN RIDGE ROAD P.O. BOX 718 LINN, MO. 65051</p>		
End Customer:			

NOTICE		Drawn By: S.A.H.	Date: 09-15-14	Scale: NOT TO SCALE
This drawing and/or the information hereon is the exclusive property of Osage Industries and shall not be reproduced, used or disclosed without the authorized written consent of Osage Industries.		Drawing Description: EXTERIOR LAYOUT, STREETSIDE TERRA STAR TYPE-I (SUPER-WARRIOR)		Revision#
				1

3				
2				
1				
Rev.#	Revision Description	Date	Rev'd	App'vd



NOTES: THIS DRAWING IS NOT TO SCALE.
 CHARACTERISTICS AND DIMENSIONS OF FINISHED PRODUCT MAY VARY.

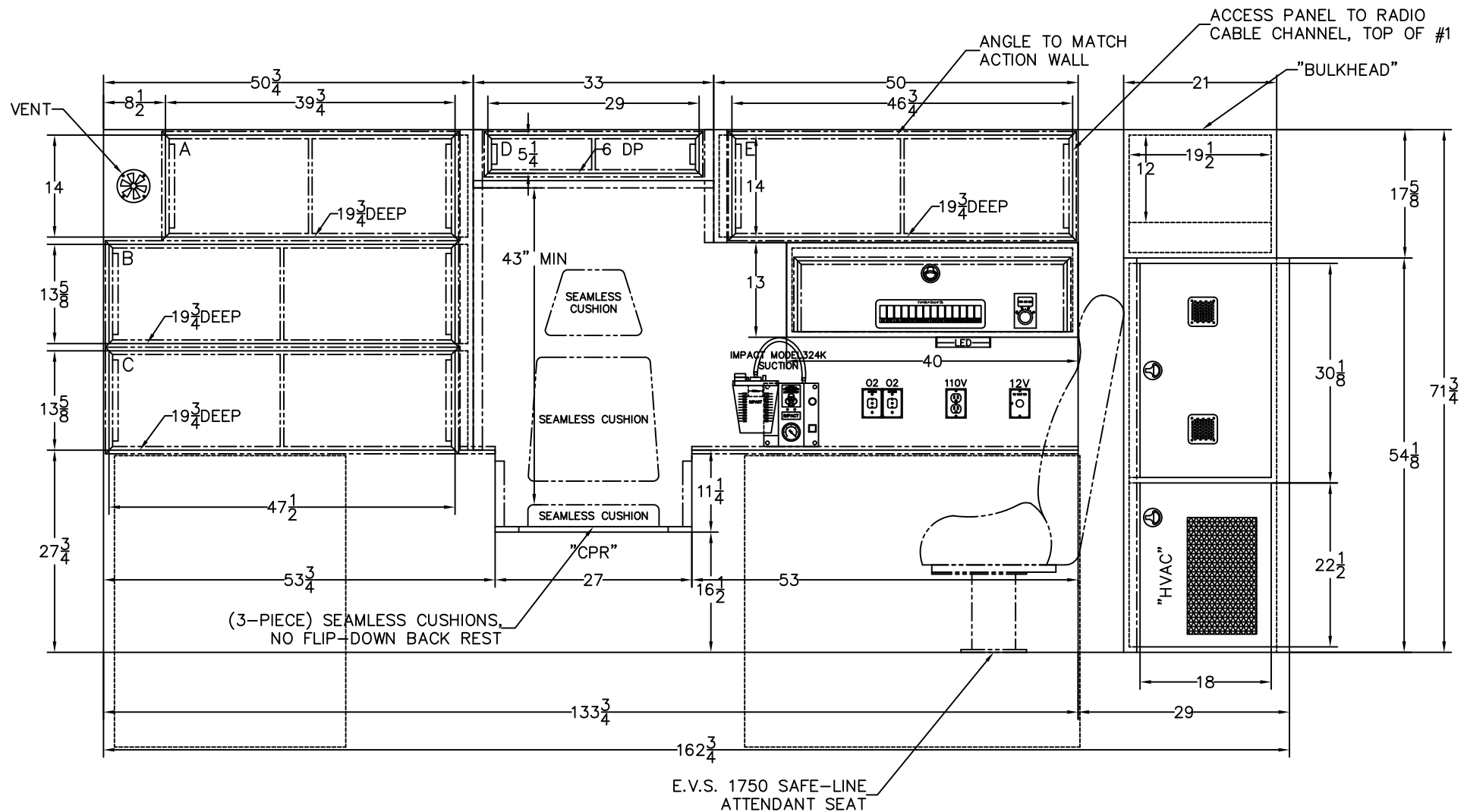
- NOTES:
- 1.) COMPARTMENT DIMENSIONS REFLECT OPENING CLEARANCE.
 - 2.) APPROXIMATE COMPARTMENT DEPTH=21"DEEP.
 - 3.) MODULE DIMENSIONS=168"L x 96"W x 93"H.
 - 4.) INTERIOR MODULE HEAD ROOM=72"H.
 - 5.) ALL 9x7 LIGHTS TO BE WHELEN 900 SERIES LIGHTS.
 - 6.) DOUBLE STAINLESS THRESHOLDS.
 - 7.) STYROFOAM INSULATION, WALLS & CEILING.

Stock/Job#:	Drawing# 15-1-2168-SW-100	Cust. App'v/Date#	Deal'r App'v/Date:
-------------	------------------------------	-------------------	--------------------

Osage Dealer:	<h1 style="margin: 0;">Osage Industries, Inc.</h1> <p style="margin: 0;">TWIN RIDGE ROAD P.O. BOX 718 LINN, MO. 65051</p>		
End Customer:			

NOTICE		Drawn By: S.A.H.	Date: 09-15-14	Scale: NOT TO SCALE
This drawing and/or the information hereon is the exclusive property of Osage Industries and shall not be reproduced, used or disclosed without the authorized written consent of Osage Industries.		Drawing Description: EXTERIOR LAYOUT, CURBSIDE TERRA STAR TYPE-I (SUPER-WARRIOR)		

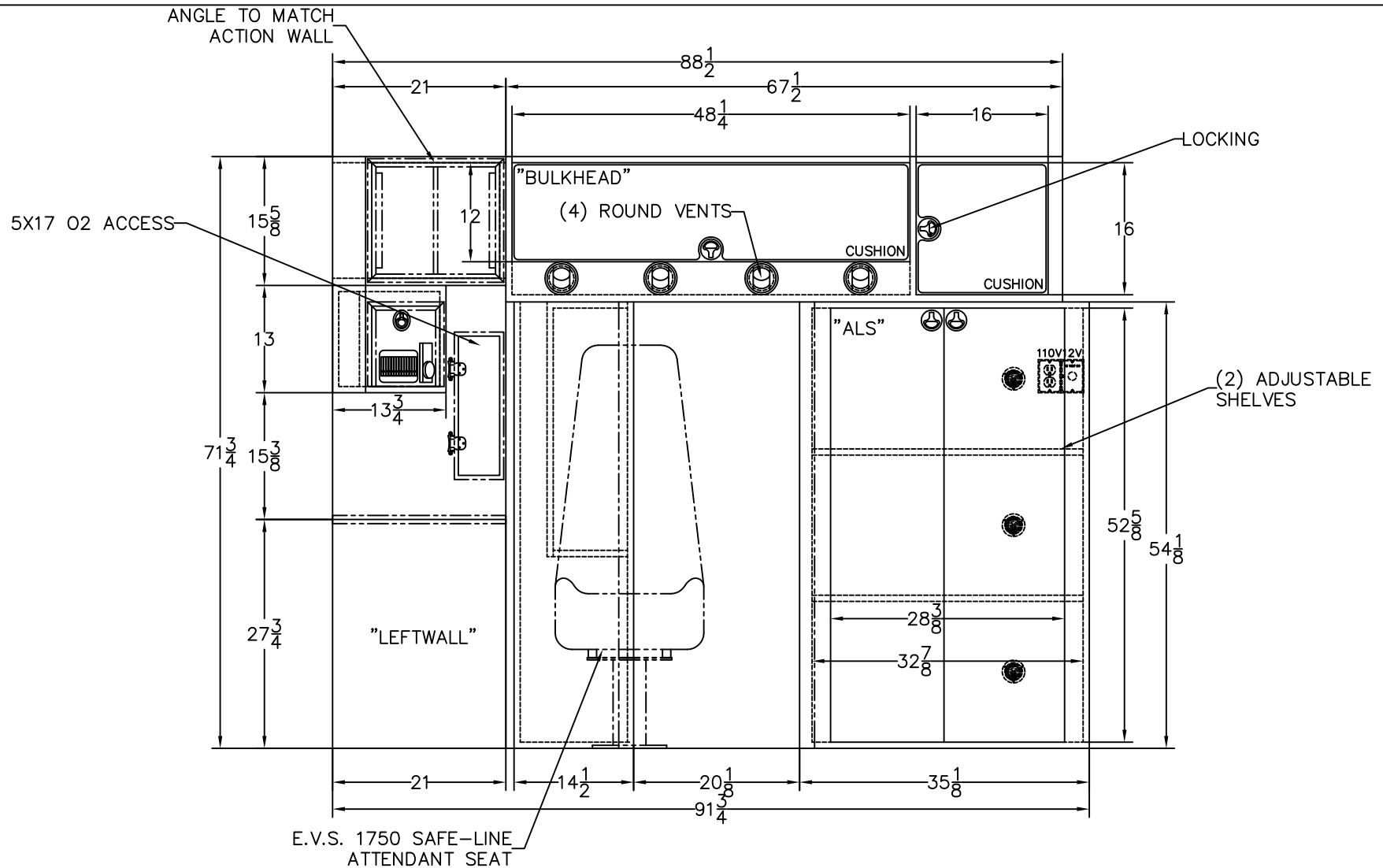
Rev.#	Revision Description	Date	Rev'd	App'vd
3				
2				
1				



NOTES: THIS DRAWING IS NOT TO SCALE.
CHARACTERISTICS AND DIMENSIONS OF FINISHED PRODUCT MAY VARY.

NOTES: CABINET DEPTHS REPRESENT DIMENSION FROM INSIDE REAR TO FRONT FACE OF CABINETS, WITHOUT TRIM. ACTUAL WORKING DEPTH WILL BE LESS THAN DIMENSION SHOWN UNLESS OTHERWISE SPECIFIED.

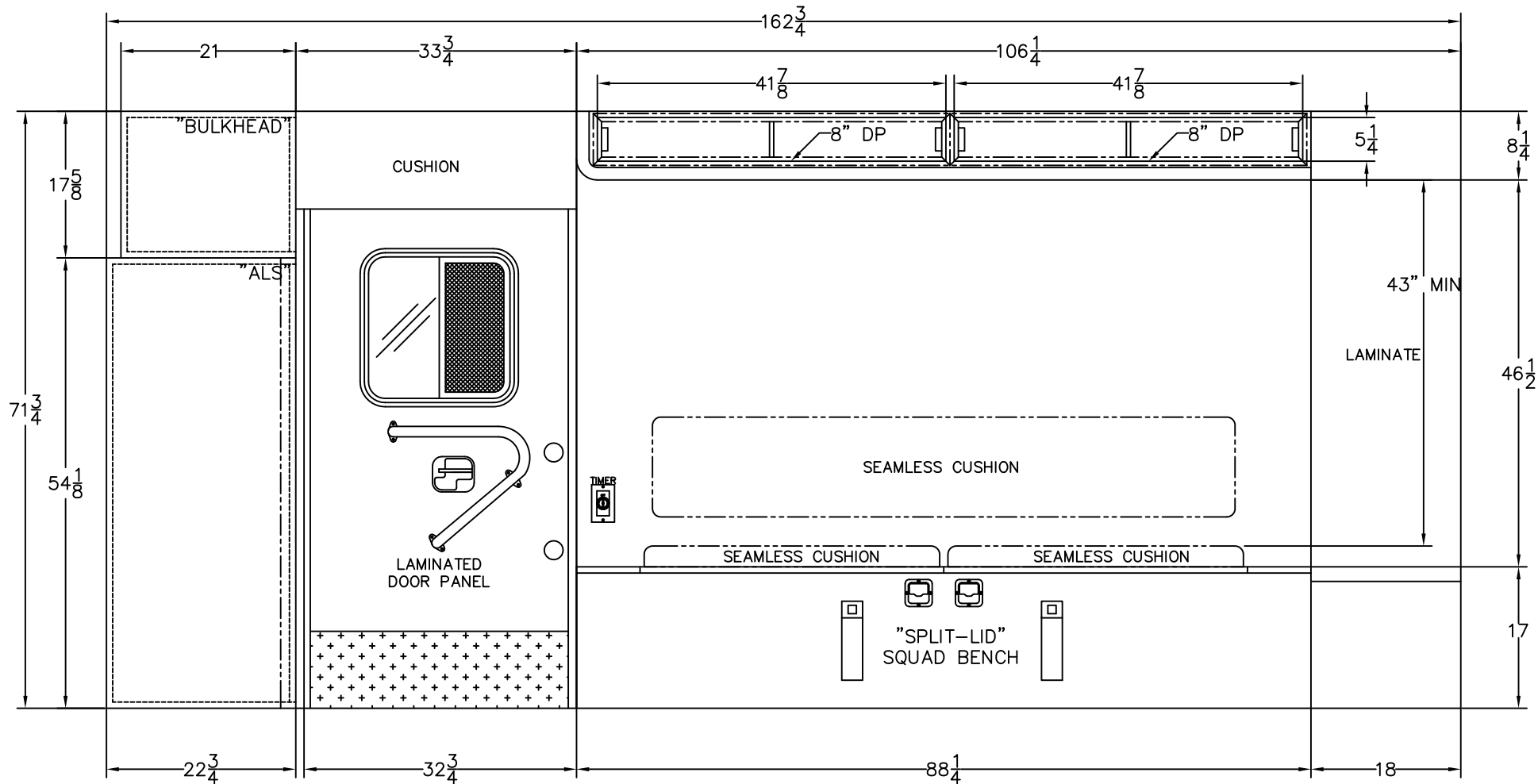
Stock/Job#:	Drawing#	Cust. App'v/Date#	Deal'r App'v/Date:
Osage Dealer:	15-1-2168-SW-101		
End Customer:	Osage Industries, Inc.		
	TWIN RIDGE ROAD	P.O. BOX 718	LINN, MO. 65051
NOTICE		Drawn By: S.A.H	Date: 09-15-14
This drawing and/or the information hereon is the exclusive property of Osage Industries and shall not be reproduced, used or disclosed without the authorized written consent of Osage Industries.		Scale: NOT TO SCALE	
		Drawing Description: STREETSIDE INTERIOR, TYPE-I TERRA STAR (SUPER-WARRIOR)	
Rev.#	Revision Description	Date	Rev'd App'vd
3			
2			
1			
			Revision# 1



NOTES: THIS DRAWING IS NOT TO SCALE.
CHARACTERISTICS AND DIMENSIONS OF FINISHED PRODUCT MAY VARY.

NOTES: CABINET DEPTHS REPRESENT DIMENSION FROM
INSIDE REAR TO FRONT FACE OF CABINETS, WITHOUT TRIM.
ACTUAL WORKING DEPTH WILL BE LESS THAN DIMENSION
SHOWN UNLESS OTHERWISE SPECIFIED.

Stock/Job#	Drawing#	Cust. App'v/Date#	Deal'r App'v/Date:
Osage Dealer:	15-1-2168-SW-102		
End Customer:	Osage Industries, Inc.		
	TWIN RIDGE ROAD	P.O. BOX 718	LINN, MO. 65051
NOTICE		Drawn By: S.A.H.	Date: 09-15-14
This drawing and/or the information hereon is the exclusive property of Osage Industries and shall not be reproduced, used or disclosed without the authorized written consent of Osage Industries.		Scale: NOT TO SCALE	
		Drawing Description: FORWARD INTERIOR, TYPE-I TERRA STAR (SUPER-WARRIOR)	
Rev.#	Revision Description	Date	Rev'd App'vd
3			
2			
1			
			Revision# 1



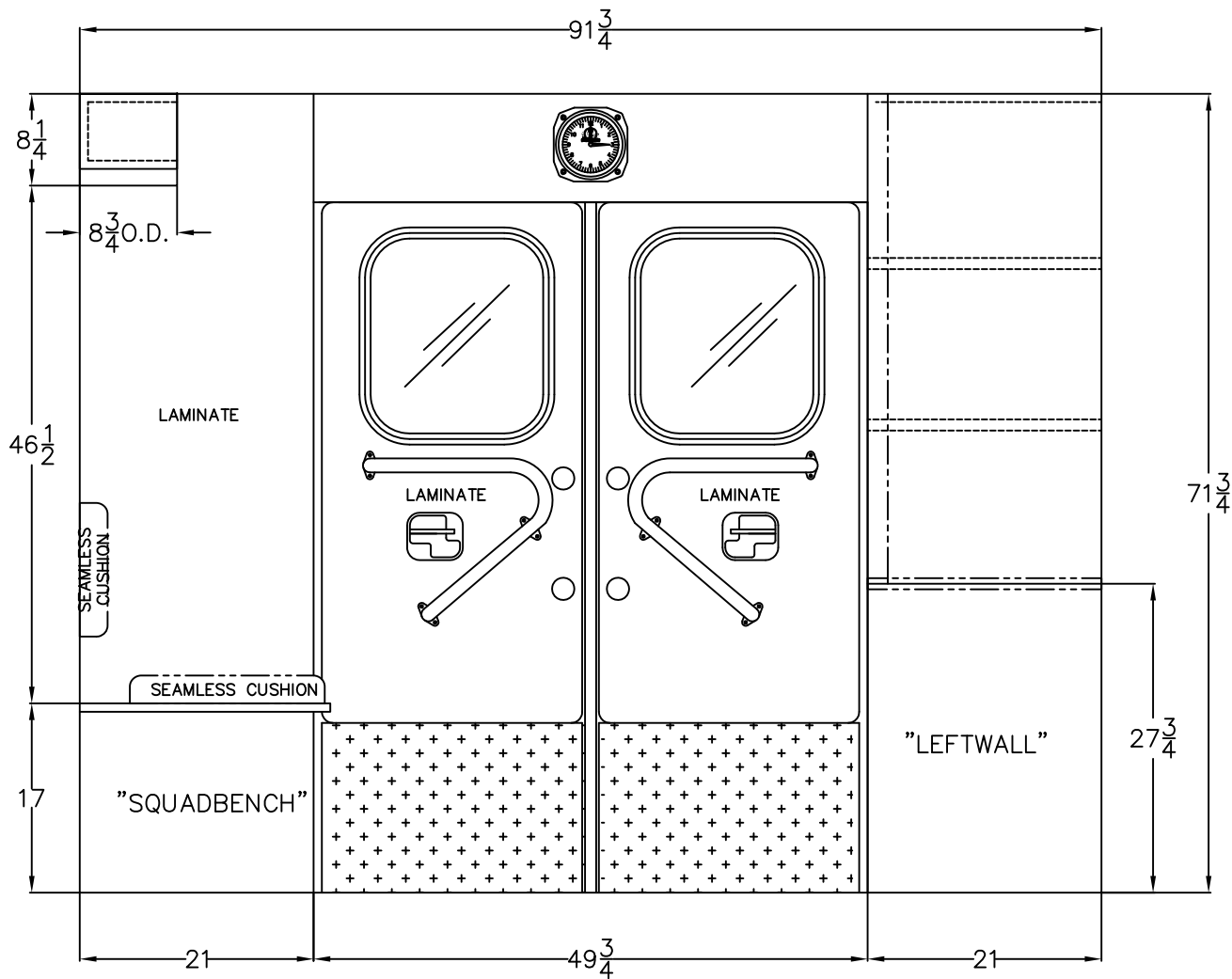
NOTES: THIS DRAWING IS NOT TO SCALE.
 CHARACTERISTICS AND DIMENSIONS OF FINISHED PRODUCT MAY VARY.

NOTES: CABINET DEPTHS REPRESENT DIMENSION FROM INSIDE REAR TO FRONT FACE OF CABINETS, WITHOUT TRIM. ACTUAL WORKING DEPTH WILL BE LESS THAN DIMENSION SHOWN UNLESS OTHERWISE SPECIFIED.

Stock/Job#:	Drawing# 15-1-2168-SW-103	Cust. App'v/Date#	Deal'r App'v/Date:
Osage Dealer:	<h1>Osage Industries, Inc.</h1>		
End Customer:			
TWIN RIDGE ROAD		P.O. BOX 718	LINN, MO. 65051

NOTICE		Drawn By: S.A.H.	Date: 09-15-14	Scale: NOT TO SCALE
This drawing and/or the information hereon is the exclusive property of Osage Industries and shall not be reproduced, used or disclosed without the authorized written consent of Osage Industries.		Drawing Description: CURBSIDE INTERIOR, TYPE-I TERRA STAR (SUPER-WARRIOR)		Revision# 1

3				
2				
1				
Rev.#	Revision Description	Date	Rev'd	App'vd



NOTES: THIS DRAWING IS NOT TO SCALE.
 CHARACTERISTICS AND DIMENSIONS OF FINISHED PRODUCT MAY VARY.

NOTES: CABINET DEPTHS REPRESENT DIMENSION FROM
 INSIDE REAR TO FRONT FACE OF CABINETS, WITHOUT TRIM.
 ACTUAL WORKING DEPTH WILL BE LESS THAN DIMENSION
 SHOWN UNLESS OTHERWISE SPECIFIED.

Stock/Job#:	Drawing# 15-1-2168-SW-104	Cust. App'v/Date#	Deal'r App'v/Date:
Osage Dealer:	<h1>Osage Industries, Inc.</h1>		
End Customer:			
TWIN RIDGE ROAD		P.O. BOX 718	LINN, MO. 65051

NOTICE		Drawn By: S.A.H.	Date: 09-15-14	Scale: NOT TO SCALE
This drawing and/or the information hereon is the exclusive property of Osage Industries and shall not be reproduced, used or disclosed without the authorized written consent of Osage Industries.		Drawing Description: REARWARD INTERIOR, TYPE-I TERRA STAR (SUPER-WARRIOR)		Revision# 1
		Rev.#	Revision Description	Date

3				
2				
1				
Rev.#	Revision Description	Date	Rev'd	App'vd



NOTES: THIS DRAWING IS NOT TO SCALE.
 CHARACTERISTICS AND DIMENSIONS OF FINISHED
 PRODUCT MAY VARY.

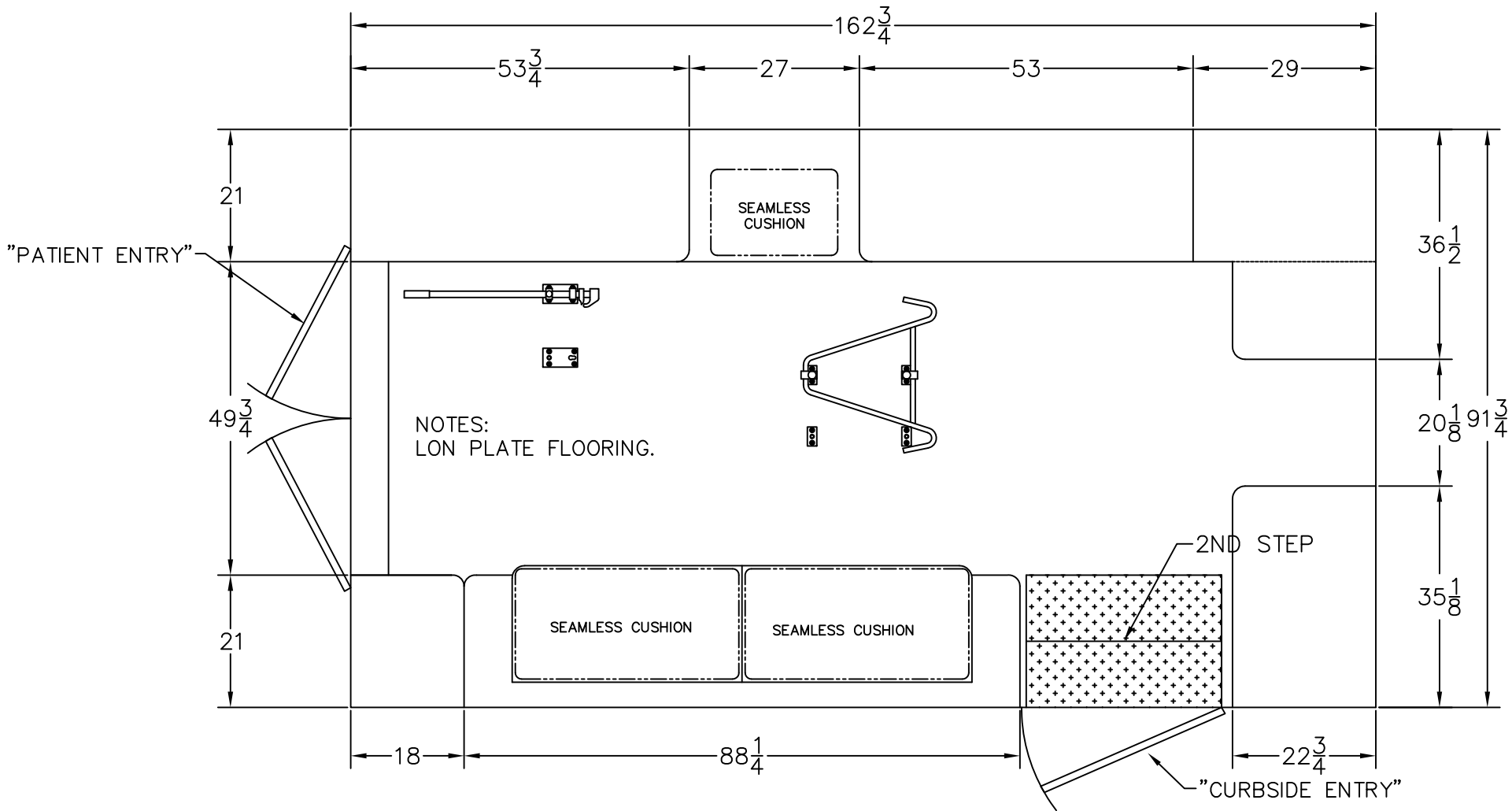
Stock/Job#:	Drawing# 15-1-2168-SW-105	Cust. App'v/Date#	Deal'r App'v/Date:
-------------	------------------------------	-------------------	--------------------

Osage Dealer:	<h1 style="margin: 0;">Osage Industries, Inc.</h1> <p style="margin: 0;">TWIN RIDGE ROAD P.O. BOX 718 LINN, MO. 65051</p>		
End Customer:			

NOTICE		Drawn By: S.A.H.	Date: 09-15-14	Scale: NOT TO SCALE
--------	--	---------------------	-------------------	------------------------

This drawing and/or the information hereon is the exclusive property of Osage Industries and shall not be reproduced, used or disclosed without the authorized written consent of Osage Industries.	Drawing Description:		Revision#
	CEILING LAYOUT, TYPE-I TERRA STAR (SUPER-WARRIOR)		1

Rev.#	Revision Description	Date	Rev'd	App'vd
3				
2				
1				



NOTES: THIS DRAWING IS NOT TO SCALE.
CHARACTERISTICS AND DIMENSIONS OF FINISHED
PRODUCT MAY VARY.

Stock/Job#:	Drawing# 15-01-2168-SW-106	Cust. App'v/Date#	Deal'r App'v/Date:
Osage Dealer:	<h1>Osage Industries, Inc.</h1> <p>TWIN RIDGE ROAD P.O. BOX 718 LINN, MO. 65051</p>		
End Customer:			

NOTICE				Drawn By: S.A.H.	Date: 09-15-14	Scale: NOT TO SCALE
This drawing and/or the information hereon is the exclusive property of Osage Industries and shall not be reproduced, used or disclosed without the authorized written consent of Osage Industries.				Drawing Description: FLOOR LAYOUT, TYPE-I TERRA STAR (SUPER-WARRIOR)		Revision#
						1

3				
2				
1				
Rev.#	Revision Description	Date	Rev'd	App'vd

Prepared For:
TEN-8 FIRE EQUIPMENT
CINDY MORGAN
5904 59TH AVE. DR. E
Bradenton, FL 34203-
(941)756 - 7779

Presented By:
PORTLAND NORTH TRK CTR
Steven E Gray
110 GRAY ROAD
FALMOUTH ME 04105 -
(207)797-8080

Thank you for the opportunity to provide you with the following quotation on a new International truck. I am sure the following detailed specification will meet your operational requirements, and I look forward to serving your business needs.

TOP SPEED IS 79 MPH.

Model Profile
2016 TERRASTAR SFA 4x2 (TA005)

APPLICATION:	Ambulance
MISSION:	Requested GVWR: 19000. Calc. GVWR: 19000 Calc. Start / Grade Ability: 37.20% / 2.87% @ 55 MPH
DIMENSION:	Wheelbase: 183.00, CA: 108.60, Axle to Frame: 63.00
ENGINE, DIESEL:	{MaxxForce 7} EPA 10, 300 HP @ 2600 RPM, 660 lb-ft Torque @ 1600 RPM, 2800 RPM Governed Speed, 300 Peak HP (Max)
TRANSMISSION, AUTOMATIC:	{Allison 1000_EVS_P} 5th Generation Controls; Close Ratio, 6-Speed, With Overdrive; Includes Park Pawl, With PTO Provision, Less Retarder, With 19,500-lb GVW & 26,000-lb GCW Max.
CLUTCH:	Omit Item (Clutch & Control)
AXLE, FRONT NON-DRIVING:	{Dana Spicer D700-N} I-Beam Type, 7,000-lb Capacity
AXLE, REAR, SINGLE:	{Dana Spicer S110} Single Reduction, With Offset Housing; 13,500-lb Capacity, 160 Wheel Ends Gear Ratio: 4.10
CAB:	Conventional
TIRE, FRONT:	(3) 225/70R19.5 XZE (MICHELIN) 646 rev/mile, load range F, 12 ply
TIRE, REAR:	(4) 225/70R19.5 XZE (MICHELIN) 646 rev/mile, load range F, 12 ply
SUSPENSION, REAR, AIR, SINGLE:	{International} Ride Optimized Suspension (IROS); 12,000-lb Capacity, 6.0" Ride Height, With Shock Absorbers
PAINT:	Cab schematic 100TA Location 1: 9219, Winter White (Std) Chassis schematic N/A

Description

Base Chassis, Model TERRASTAR SFA 4x2 with 183.00 Wheelbase, 108.60 CA, and 63.00 Axle to Frame.

F/R Wt Tot Wt
(lbs) (lbs)
4676/2731 7407

TOW HOOK, FRONT (2) Frame Mounted

11/-1 10

FRAME RAILS High Strength Low Alloy Steel (80,000 PSI Yield); 7.375" x 3.079" x .312" (187.45mm x 78.2mm x 8.0mm) With Transition to 9.125" x 3.079" x .312" (231.8mm x 78.2mm x 8.0mm); Includes 1.2" (30mm) Drop Under Cab; 335.2" (8512.2mm) Maximum OAL

30/87 117

Notes

: Refer to WB/AF COMBINATIONS Chart in the Compatibility Charts section of the CT-400 Data Book and the Price List for compatible AF dimension.

LICENSE PLATE HOLDER Includes Upper & Lower Mounting Plate Hardware, Mounted in Existing Holes in Front Bumper

1/0 1

BUMPER, FRONT Full Width, Aerodynamic, Steel, Chrome Plated, 0.118" Material Thickness

0/0 0

CROSSMEMBER, REAR, AF (01)

0/0 0

WHEELBASE RANGE 128" (325cm) Through and Including 183" (465cm)

0/0 0

AXLE, FRONT NON-DRIVING {Dana Spicer D700-N} I-Beam Type, 7,000-lb Capacity

0/0 0

SUSPENSION, FRONT, SPRING Taper Leaf, Shackle Type; 7,000-lb Capacity; With Shock Absorbers

54/-11 43

Includes

: SPRING PINS Rubber Bushings, Maintenance-Free

BRAKE SYSTEM, HYDRAULIC {TRW 355} Split System, With Three Channel ABS

0/0 0

Includes

: BRAKE LININGS, FRONT HX-73, Non-Asbestos

: BRAKE LININGS, REAR HX-73, Non-Asbestos

AIR DRYER {Meritor Wabco System Saver 1200} with Heater

11/5 16

Includes

: AIR DRYER LOCATION Outside Left Rail, Under Cab

BRAKE, PARKING {TRW} Drum-in-Hat Type; for Hydraulic Brake chassis; Activated by Lever in Cab; Mounted in Rear Wheels

0/0 0

Includes

: PARKING BRAKE CONTROL Lever, Floor Mounted, Located Right of Driver

BRAKES, FRONT, HYDRAULIC DISC {TRW} 15.35" x 1.54" Rotors; Dual 2.36" (60mm) Diam. Pistons

0/0 0

BRAKES, REAR, HYDRAULIC DISC {TRW} 15.35" x 1.54" Rotors; Dual 2.36" (60mm) Diam. Pistons

0/0 0

<u>Description</u>	<u>F/R</u>	<u>Wt</u>	<u>Tot</u>	<u>Wt</u>
		(lbs)		(lbs)
AIR COMPRESSOR {Bendix Tu-Flo 550} 13.2 CFM Capacity; and Tank for Air Source on Hydraulic Chassis		56/-1		55
STEERING COLUMN Tilting and Telescoping		3/0		3
STEERING WHEEL 2-Spoke, 18" Diam., Black		0/0		0
STEERING GEAR {Sheppard MD83} Power		0/0		0
EXHAUST SYSTEM Single, Horizontal, Aftertreatment Device Frame Mounted Right Side Back of Cab, Includes Horizontal Tail Pipe		0/0		0
<u>Includes</u>				
: NOTE: The Horizontal Tailpipe Includes a Temperature Control Device				
SWITCH, FOR EXHAUST 3 Position, Momentary, Lighted Momentary, ON/CANCEL, Center Stable, INHIBIT REGEN, Mounted in IP Inhibits Diesel Particulate Filter Regeneration When Switch is Moved to ON While Engine is Running, Resets When Ignition is Turned OFF		2/0		2
ELECTRICAL SYSTEM 12-Volt, Standard Equipment		0/0		0
<u>Includes</u>				
: BATTERY BOX Steel				
: DATA LINK CONNECTOR For Vehicle Programming and Diagnostics In Cab				
: FUSES, ELECTRICAL SAE Blade-Type				
: HAZARD SWITCH Push On/Push Off, Located on Top of Steering Column Cover				
: HEADLIGHT DIMMER SWITCH Integral with Turn Signal Lever				
: HEADLIGHTS (2) Sealed Beam Halogen, 5" x 7" Rectangular, with Molded-In Argent Colored Bezels				
: JUMP START STUD Located on Positive Terminal of Outermost Battery				
: PARKING LIGHT Integral with Front Turn Signal and Rear Tail Light				
: RUNNING LIGHT (2) Daytime, Included With Headlights				
: STARTER SWITCH Electric, Key Operated				
: STOP, TURN, TAIL & B/U LIGHTS Dual, Rear, Combination with Reflector				
: TURN SIGNAL SWITCH Self-Cancelling for Trucks, Manual Cancelling for Tractors, with Lane Change Feature				
: TURN SIGNALS, FRONT Includes Reflectors and Solid State Flashers; Flush Mounted				
: WINDSHIELD WIPER SWITCH 2-Speed with Wash and Intermittent Feature (5 Pre-Set Delays), Integral with Turn Signal Lever				
: WINDSHIELD WIPERS Single Motor, Electric, Cowl Mounted				
: WIRING, CHASSIS Color Coded and Continuously Numbered				
HORN, ELECTRIC (2) Disc Style		1/0		1
POWER SOURCE Cigar Type Receptacle without Plug and Cord		1/0		1
ALTERNATOR {Leece-Neville 14931PAH} Brush Type, 12 Volt 320 Amp. Capacity, Pad Mount		13/0		13
BODY BUILDER WIRING Rear of Frame; Includes Sealed Connectors for Tail/Amber Turn/Marker/ Backup/Accessory Power/Ground and Sealed Connector for Stop/Turn		0/3		3

<u>Description</u>	<u>F/R Wt Tot Wt</u>	
	(lbs)	(lbs)
BATTERY SYSTEM {International} Maintenance-Free (3) 12-Volt 2250CCA Total	58/20	78
RADIO AM/FM/WB/Clock/3MM Auxiliary Input, with Multiple Speakers, With CD Player	1/0	1
JUMP START STUD Remote Mounted	0/0	0
HORN, AIR Black, Single Trumpet, Air Solenoid Operated	2/0	2
SWITCH, AIR HORN, PASSENGER Fire Truck Application; Momentary Switch Located in Instrument Panel Close to Passenger, Driver Also To Activate Switch at Steering Wheel	1/0	1
WINDSHIELD WIPER SPD CONTROL Force Wipers to Slowest Intermittent Speed When Park Brake Set and Wipers Left on for a Predetermined Time	0/0	0
CLEARANCE/MARKER LIGHTS (5) {Truck Lite} Amber LED Lights, Flush Mounted on Cab or Sunshade	0/0	0
TEST EXTERIOR LIGHTS Pre-Trip Inspection will Cycle all Exterior Lamps Except Back-up Lights	0/0	0
HEADLIGHTS ON W/WIPERS Headlights Will Automatically Turn on if Windshield Wipers are turned on	0/0	0
INDICATOR, LOW COOLANT LEVEL With Audible Alarm	0/0	0
STARTING MOTOR {Delco Remy 29MT} 12 Volt; Less Thermal Over-Crank Protection, With Integrated Magnetic Switch	0/0	0
CIRCUIT BREAKERS Manual-Reset (Main Panel) SAE Type III With Trip Indicators, Replaces All Fuses Except For 5-Amp Fuses	0/0	0
GRILLE Chrome, with Chrome Headlight Bezels	5/0	5
FRONT END Tilting, Fiberglass, With Three Piece Construction	0/0	0
<u>Includes</u> : HOOD TILT ASSIST Includes Torsion Bar Spring System		
GRILLE EMBER SCREEN Mounted to Grille and Cowl Tray to Keep Hot Embers out of Engine and HVAC Air Intake System	0/0	0
PAINT SCHEMATIC, PT-1 Single Color, Design 100	0/0	0
PAINT TYPE Base Coat/Clear Coat, 1-2 Tone	0/0	0
CLUTCH Omit Item (Clutch & Control)	0/0	0
BLOCK HEATER, ENGINE {Phillips} 120 Volt/1000 Watt	2/0	2
<u>Includes</u> : BLOCK HEATER SOCKET Receptacle Type; Mounted below Drivers Door		
ENGINE, DIESEL {MaxxForce 7} EPA 10, 300 HP @ 2600 RPM, 660 lb-ft Torque @ 1600 RPM, 2800 RPM Governed Speed, 300 Peak HP (Max)	0/0	0

Includes

Description

F/R Wt Tot Wt
(lbs) (lbs)

: AIR COMPRESSOR AIR SUPPLY LINE Naturally-Aspirated (Air Brake Chassis Only)		
: ANTI-FREEZE Red Shell Rotella Extended Life Coolant; -40 Degrees F/ -40 Degrees C; for MaxxFace and Navistar Engines		
: CRUISE CONTROL Electronic; Controls Integral to Steering Wheel		
: ENGINE OIL DRAIN PLUG Magnetic		
: ENGINE SHUTDOWN Electric, Key Operated		
: FUEL FILTER Engine Mounted		
: FUEL HEATER Included with Fuel/Water Separator		
: FUEL/WATER SEPARATOR Engine Mounted		
: GLOW PLUG Automatic with Indicator Light		
: GOVERNOR Electronic		
: OIL FILTER, ENGINE Drop-In Cartridge Type		
FAN DRIVE {Borg-Warner SA85} Viscous Type, Screw On	2/0	2
<u>Includes</u>		
: FAN Nylon		
RADIATOR Aluminum; 2-Row, Cross Flow, Side-by-Side System, 697 SqIn Louvered, With 225 SqIn CAC, With In-Tank Oil Cooler	0/0	0
<u>Includes</u>		
: DEAERATION SYSTEM with Surge Tank		
: HOSE CLAMPS, RADIATOR HOSES Gates Shrink Band Type; Thermoplastic Coolant Hose Clamps		
: RADIATOR HOSES Premium, Rubber		
FEDERAL EMISSIONS EPA, OBD and GHG Certified for Calendar Year 2014; MaxxFace 7 Engines	0/0	0
AIR CLEANER With Service Protection Element	0/0	0
<u>Includes</u>		
: GAUGE, AIR CLEANER RESTRICTION Air Cleaner Mounted		
OVER-TEMPERATURE PROTECTION (For Engine Coolant) Omit Item	0/0	0
THROTTLE, HAND CONTROL Engine Speed Control for PTO; Electronic, Stationary Pre- Set, Two Speed Settings; Mounted on Steering Wheel	0/0	0
ENGINE CONTROL, REMOTE MOUNTED Provision for; Includes Wiring for Body Builder Installation of PTO Controls; With Ignition Switch Control for MaxxFace and Navistar post 2007 Emissions Electronic Engines	0/0	0
FAN DRIVE SPECIAL EFFECTS Fan Cooling Ring with Fan Shroud Effects, Engine Mounted	10/0	10
EMISSION COMPLIANCE Engine Shutdown System Exempt Vehicles, Complies With California Clean Air Regulations	0/0	0

DescriptionF/R Wt Tot Wt

(lbs) (lbs)

TRANSMISSION, AUTOMATIC {Allison 1000_EVS_P} 5th Generation Controls; Close Ratio, 6-Speed, With Overdrive; Includes Park Pawl, With PTO Provision, Less Retarder, With 19,500-lb GVW & 26,000-lb GCW Max.

-6/8 2

WIRING, TRANS, BODY BUILDER Installed Wiring for Transmission/PTO Controls, for Allison 1000, 2000, 2100, 2200, 2400, 2500 Series Transmission

3/0 3

TRANSMISSION OIL Synthetic; 20 thru 28 Pints

0/0 0

SHIFT CONTROL PARAMETERS Allison 1000 or 2000 Series Transmissions, 5th Generation Controls, Performance Programming

0/0 0

DIFFERENTIAL, LOCKING {Dana Spicer Truetrac} Torque Proportioning Limited Slip

0/0 0

Notes

: Axle Lead Time is 90 Days

SUSPENSION AIR CONTROL VALVE Pressure Release Control In Cab

0/1 1

AXLE, REAR, SINGLE {Dana Spicer S110} Single Reduction, With Offset Housing; 13,500-lb Capacity, 160 Wheel Ends . Gear Ratio: 4.10

0/0 0

Includes

: REAR AXLE DRAIN PLUG (1) Magnetic, For Single Rear Axle

SUSPENSION, REAR, AIR, SINGLE {International} Ride Optimized Suspension (IROS); 12,000-lb Capacity, 6.0" Ride Height, With Shock Absorbers

0/47 47

Notes

: The following features should be considered when calculating Rear GAWR: Rear Axles; Rear Suspension; Brake System; Brakes, Rear Air Cam; Brake Shoes, Rear; Special Rating, GAWR; Wheels; Tires.

FUEL TANK Top Draw; Rectangular, Steel; 15" Tank Depth, 40 U.S. Gal., 151 L Capacity, Includes Fuel Filler Assembly and Vent Hosing, Mounted Between Frame Sidemembers and Behind Rear Axle

0/0 0

CAB Conventional

0/0 0

Includes

: ARM REST (2) Molded Plastic; One Each Door

: CLEARANCE/MARKER LIGHTS (5) Flush Mounted

: COAT HOOK, CAB Located on Rear Wall, Centered Above Rear Window

: CUP HOLDERS Two Cup Holders, Located in Lower Center of Instrument Panel

: DOME LIGHT, CAB Rectangular, Door Activated and Push On-Off at Light Lens, Timed Theater Dimming, Integral to Console, Center Mounted

: GLASS, ALL WINDOWS Tinted

: GRAB HANDLE, CAB INTERIOR (1) "A" Pillar Mounted, Passenger Side

: GRAB HANDLE, CAB INTERIOR (2) Front of "B" Pillar Mounted, One Each Side

: INTERIOR SHEET METAL Upper Door (Above Window Ledge) Painted Exterior Color

: STEP (2) One Per Door

<u>Description</u>	<u>F/R</u>	<u>Wt</u>	<u>Tot</u>	<u>Wt</u>
		(lbs)		(lbs)
AIR CONDITIONER, PROVISION FOR Accommodation Package, for Air Conditioning, Includes (1) SD7 Sanden Auxiliary Compressor in Secondary Compressor Position and Compressor Drive Effects for Vehicle With Primary Compressor Mounting		27/0		27
GRAB HANDLE, CAB INTERIOR (2) Safety Yellow		5/3		8
GAUGE CLUSTER English With English Electronic Speedometer		0/0		0
<u>Includes</u>				
: GAUGE CLUSTER (5) Engine Oil Pressure (Electronic), Water Temperature (Electronic), Fuel (Electronic), Tachometer (Electronic), Voltmeter				
: ODOMETER DISPLAY, Miles, Trip Miles, Engine Hours, Trip Hours, Fault Code Readout				
: WARNING SYSTEM Low Fuel, Low Oil Pressure, High Engine Coolant Temp, and Low Battery Voltage (Visual and Audible)				
GAUGE, OIL TEMP, ALLISON TRAN		1/0		1
GAUGE, AIR CLEANER RESTRICTION {Filter-Minder} With Black Bezel Mounted in Instrument Panel		1/0		1
IP CLUSTER DISPLAY On Board Diagnostics Display of Fault Codes in Gauge Cluster		0/0		0
SEAT, DRIVER {National 2000} Air Suspension, High Back With Integral Headrest, Vinyl, Isolator, 1 Chamber Lumbar, With 2 Position Front Cushion Adjust, -3 to +14 Degree Angle Back Adjust		15/5		20
<u>Includes</u>				
: SEAT BELT 3-Point, Lap and Shoulder Belt Type				
SEAT, PASSENGER {National 2000} Air Suspension, High Back With Integral Headrest, Vinyl, Isolated, 1 Chamber Lumbar, 2 Position Front Cushion Adjustment, -3 to +14 Degree Back Adjust		18/6		24
GRAB HANDLE (2) Chrome Towel Bar Type With Anti-Slip Rubber Inserts; for Cab Entry, Mounted Left and Right, Each Side at "B" Pillar		6/0		6
MIRRORS (2) {Lang Mekra} Styled; Rectangular, 7.09" x 15.75" & Integral Convex Both Sides, 102" Inside Spacing, Breakaway Type, Thermostatically Controlled Heated Heads, Power Both Sides, Clearance Lights LED, Bright Finish Heads & Brackets		14/4		18
SEAT BELT All Red; 1 to 3		0/0		0
ARM REST, RIGHT, DRIVER SEAT		3/0		3
ARM REST, LEFT, PASSENGER SEAT		3/0		3
AIR CONDITIONER {Blend-Air} With Integral Heater & Defroster		62/6		68
<u>Includes</u>				
: HEATER HOSES Premium				
: HOSE CLAMPS, HEATER HOSE Mubea Constant Tension Clamps				
: REFRIGERANT Hydrofluorocarbon HFC-134A				

Description

	<u>F/R</u>	<u>Wt</u>	<u>Tot</u>	<u>Wt</u>
	(lbs)		(lbs)	
HEATER CONNECTION for International V8 Engines, With Dual Heater Outlets to Accommodate Shutoff Valves or Aftermarket Secondary Heater Requirements	0/0		0	
INSTRUMENT PANEL Center Section, Flat Panel	0/0		0	
WINDOW, POWER (2) And Power Door Locks, Left and Right Doors, Includes Express Down Feature	5/0		5	
HVAC FRESH AIR FILTER	4/0		4	
CAB INTERIOR TRIM Premium	0/0		0	
<u>Includes</u>				
: "A" PILLAR COVER Molded Plastic				
: CAB INTERIOR TRIM PANELS Cloth Covered Molded Plastic, Full Height; All Exposed Interior Sheet Metal is Covered Except for the Following: with a Two-Man Passenger Seat or with a Full Bench Seat the Back Panel is Completely Void of Covering				
: CAB SOUND INSULATION Includes Dash and Engine Cover Insulators				
: CONSOLE, OVERHEAD Molded Plastic; With Dual Storage Pockets with Retainer Nets, CB Radio Pocket, Speakers, and Reading Lights				
: COURTESY LIGHT (2) Mounted In Front Map Pocket Left and Right Side				
: DOOR TRIM PANELS with Cloth Insert on Bolster Driver and Passenger Doors				
: FLOOR COVERING Rubber, Black				
: GAUGE, TEMPERATURE, AMBIENT Includes Wiring and Sensor With Display Unit Mounted in Cluster				
: HEADLINER Soft Padded Cloth				
: INSTRUMENT PANEL TRIM Molded Plastic with Black Center Section				
: STORAGE POCKET, DOOR (2) Molded Plastic (Carpet Texture), Full-Length; Driver and Passenger Doors				
: SUN VISOR (3) Padded Vinyl: 2 Moveable (Front-to-Side) Primary Visors, Driver Side with Vanity Mirror and Toll Ticket Strap, plus 1 Auxiliary Visor (Front Only), Driver Side				
LOW WASHER FLUID INDICATOR	1/0		1	
MODESTY PANEL Painted	0/0		0	
WHEEL, SPARE, DISC 19.5" Painted Steel, 10 Stud (225MM BC) Hub Piloted, Flange Nut, Metric Mount, 6.00DC Rim	0/54		54	
WHEELS, FRONT DISC; 19.5" Painted Steel, 10-Stud (225mm BC) Hub-Piloted, Flanged Nut, Metric Mount, 6.00 DC Rims; With Steel Hubs	0/0		0	
WHEELS, REAR DISC; 19.5" Painted Steel, 10-Stud (225mm BC) Hub-Piloted, Flanged Nut, Metric Mount, 6.00 DC Rims; With Steel Hubs	0/0		0	
TIRE, SPARE Equal to Model Standard	0/63		63	

Notes

: NOTE: Only One Spare Tire per Truck Ordered. Order Must Reflect Number of Tires Required (Including Spare). 10-Digit Tire Code and Spare Rim/Wheel Code Must be Specified.

Description

	<u>F/R</u>	<u>Wt</u>	<u>Tot</u>	<u>Wt</u>
		(lbs)		(lbs)
BDY INTG, REMOTE POWER MODULE Mounted Inside Cab behind Driver Seat; Up to 6 Outputs & 6 Inputs, Max. 20 amp. per Channel, Max. 80 amp Total (Includes 1 Switch Pack With Latched Switches)		0/0		0
BDY INTG, RPM I/O HARNESS Includes a Harness with Six Input Blunt Cut Wires and Six Output Blunt Cut Wires, for use with one RPM		0/0		0
(3) TIRE, FRONT 225/70R19.5 XZE (MICHELIN) 646 rev/mile, load range F, 12 ply		-3/0		-3
(4) TIRE, REAR 225/70R19.5 XZE (MICHELIN) 646 rev/mile, load range F, 12 ply		0/-4		-4
Cab schematic 100TA				
Location 1: 9219, Winter White (Std)				
Chassis schematic N/A				
Services Section:				
WARRANTY Standard for Terrastar Models, Effective with Vehicles Built January 2, 2014 or Later, CTS-2580D		0/0		0
Total Component Weight:		5099/3026		8125
DUAL LEVELING VALVES		0/0		0
PING TANKS		0/0		0
DUAL STUTTERTONE HORNS MOUNTED ON HOOD WITH STEERING WHEEL SWITCH AND PASSENGER SIDE DASH SWITCH		0/0		0
EXTEND RIGHT (PASSENGER) SIDE EXHAUST TO EXIT IN FRONT OF DRIVE TIRES ON LEFT (DRIVER) SIDE		0/0		0
MODIFICATION		0/0		0
INSTALL OSAGE TEMPLATE		0/0		0
INSTALL AIR DRYER MUFFLER		0/0		0
INSTALL AIR ACTUATED PUSH/PULL PARK BRAKE WITH YELLOW KNOB LOCATED		0/0		0
Total Goods Purchased:		0/0		0

The weight calculations included in this proposal are an estimate of future vehicle weight. The actual weight as manufactured may be different from the estimated weight. Navistar, Inc. shall not be liable for any consequences resulting from any differences between the estimated weight of a vehicle and the actual weight.

**2015 OSAGE "2168 MEDIUM-DUTY IH TERRASTAR
SUPER WARRIOR" TYPE I
AMBULANCE SPECIFICATION**

INDEX

-1-

3.7 110 VOLT AC SYSTEM
3.6 12 VOLT DC OUTLETS

-A-

1.5 AIR CLEANER
1.21 AIR COMPRESSOR
1.22 AIR DRYER
1.19 ALTERNATOR
10.3 AMD MEMBERSHIP
8.3 ANTENNA PRE-WIRE
1.9 AXLE, FRONT
1.11 AXLE, REAR

-B-

1.29 BACK-UP ALARM
1.17 BATTERIES
1.18 BATTERY DISCONNECT SWITCH
1.4 BLOCK HEATER
6.0 BODY FINISH
1.15 BRAKES
1.16 BRAKE, PARKING
4.2.2 BULKHEAD CABINETS
5.3 BUMPER, REAR STEP

-C-

4.2 CABINETS, INTERIOR
4.2.1 CABINETS, LEFT WALL
1.0 CHASSIS
4.12 CLIMATE CONTROL
3.13 CLOCK, PATIENT COMPARTMENT
1.42 CONSOLE, OVERHEAD
1.3 COOLING SYSTEM, ENGINE
4.10 COT MOUNT
1.32 CRUISE CONTROL

-D-

- 8.1 DECALS, NO SMOKING & OXYGEN EQUIPPED
- 6.2 DECALS, STAR-OF-LIFE
- 2.1 DIMENSIONS, EXTERIOR
- 2.2 DIMENSIONS, INTERIOR
- 5.4 DOOR STEP, SIDE
- 2.9 DOORS
- 3.9.1 DOOR SWITCHING

-E-

- 3.1 ELECTRICAL SERVICE PANEL
- 3.2 ELECTRICAL SERVICE PANEL ACCESS
- 3.0 ELECTRICAL SYSTEM**
- 3.5 ELECTRICAL WIRING
- 1.2 ENGINE
- 1.7 EXHAUST SYSTEM
- 5.0 EXTERIOR BODY**
- 5.6 EXTERIOR COMPARTMENT CONFIGURATION
- 2.8 EXTERIOR COMPARTMENT CONSTRUCTION

-F-

- 4.1 FLOOR, PATIENT COMPARTMENT
- 2.7 FLOOR SUB-STRUCTURE
- 1.24 FUEL FILTER /WATER SEPARATOR
- 1.23 FUEL TANK

-G-

- 1.25 GAUGES AND METERS
- 2.3 GENERAL CONSTRUCTION
- 4.8 GRAB HANDLES, DOORS
- 4.7 GRAB RAIL, OVERHEAD

-H-

- 4.5 HEADLINER
- 1.34 HEATER AND AIR CONDITIONER, CHASSIS
- 1.28 HORNS, ELECTRIC AND AIR

-I-

- 4.11 INSULATION
- 8.2 I.V. HOLDERS

-K-

10.1 KKK-A-1822-F CERTIFICATION

-L-

- 2.9 DOORS, EXTERIOR COMPARTMENT & ENTRY
- 2.9.1 LICENSE PLATE HOLDER
- 1.27 LIGHTING, CHASSIS
- 5.7 LIGHTING, DOT
- 3.8 LIGHTING, EMERGENCY
- 3.12 LIGHTS, PATIENT COMPARTMENT
- 3.3 LOAD MANAGEMENT SYSTEM
- 3.16.1 LOW VOLTAGE ALARM

-M-

- 1.35 MIRRORS, DRIVER'S
- 8.0 MISCELLANEOUS EQUIPMENT**
- 2.0 MODULE CONVERSION**
- 2.4 MOUNTING OF THE BODY
- 1.37 MUD FLAPS

-O-

- 5.6 OXYGEN COMPARTMENT
- 4.14 OXYGEN OUTLETS

-P-

- 1.38 PAINT, CHASSIS
- 6.1 PAINTING PROCEEDURE
- 4.6 PANELING, INTERIOR
- 4.0 PATIENT COMPARTMENT**
- 7.0 PAYLOAD**
- 7.1 PAYLOAD

-R-

- 1.41 RADIO, CAB
- 5.1 REAR WHEEL WELL TRIM
- 10.0 REQUIREMENTS OF THE MANUFACTURER**
- 10.4 REMOUNTING AND REFURBISHING
- 2.5 ROOF
- 5.2 RUB RAILS
- 1.36 RUNNING BOARDS, CAB ENTRY STEPS

-S-

3.9 SCENE LIGHTS
 4.3.1 SEAT, CPR
 4.3 SEAT, EMT / ATTENDANT
 1.33 SEATS, DRIVER'S COMPARTMENT
 3.4 SEQUENTIAL SWITCHING
 4.13 SHARPS CONTAINER
 2.6 SIDE WALLS
 3.10 SIREN AND SPEAKERS
 3.11 SPOTLIGHT
 4.2.4 SQUAD BENCH
 4.2.3 SQUAD BENCH CABINETS
 1.20 STARTER SWITCH
 4.9 STAINLESS STEEL SIDE WALL
 1.14 STEERING
 5.5 STONE SHIELDS
 3.14 SUCTION - ON BOARD
 1.10 SUSPENSION, FRONT
 1.12 SUSPENSION, REAR AIR
 3.16 SWITCH CONSOLE, DRIVER'S
 3.17 SWITCH CONSOLE, PATIENT COMPARTMENT

-T-

1.6 THROTTLE ADVANCE CONTROL
 1.8 TRANSMISSION
 1.39 TRIM, EXTERIOR CHASSIS
 1.40 TRIM, INTERIOR CHASSIS

-U-

4.4 UPHOLSTERY

-V-

1.1 VEHICLE AND WHEEL BASE
 3.15 VENTILATION

-W-

1.26 WARNING SYSTEM
9.0 WARRANTY
 1.13 WHEELS AND TIRES
 1.30 WINDOWS AND LOCKS, CAB
 1.31 WINDSHIELD WIPERS
 8.4 WIRING SCHEMATICS
 9.1 WARRANTY

**2015 OSAGE “2168 MEDIUM DUTY IH TERRASTAR
SUPER-WARRIOR” TYPE I
AMBULANCE SPECIFICATIONS**

1.0 CHASSIS

1.1 **VEHICLE AND WHEEL BASE**

2016 International Terrastar (4 x 2) chassis with dual rear wheels, 183-inch wheelbase, 108.6-inch Cab to Axle, 19,000lb GVWR.

COMPLY? YES ____ NO ____

1.2 **ENGINE**

Maxforce Advanced EGR, 50 State, 300 Peak HP. 660 lb-ft Torque, Oil Pan Plug to be Magnetic. Calculated Geared Speed: 81.1 MPH.

COMPLY? YES ____ NO ____

1.3 **COOLING SYSTEM, ENGINE**

Heavy Duty Liquid Cooling System of Extended Life Type Red Anti-Freeze for Protection to (-) 40 Degrees Fahrenheit, with Deaeration System and Polypropylene Tank.

COMPLY? YES ____ NO ____

1.4 **BLOCK HEATER**

Engine Block Heater, 120 volt / 1250 watt, with socket receptacle mounted under front edge of left side cab door.

COMPLY? YES ____ NO ____

1.5 **AIR CLEANER**

Single Element Air Cleaner with Restriction Gauge mounted in the Instrument Panel.

COMPLY? YES ____ NO ____

1.6 **THROTTLE ADVANCE CONTROL**

The OEM Throttle Advance Control shall be provided. When the Vehicle is in Park, the Service Brake disengaged and the Parking Brake engaged, the manually operated Throttle Advance shall elevate the Engine RPM to maximize Alternator output. The Throttle Control is to be integral in the Steering Wheel.

COMPLY? YES ____ NO ____

1.7 **EXHAUST SYSTEM**

Single Horizontal Muffler and short Tailpipe, Aluminized Steel, frame mounted on the street side to exit forward of the Drive Wheels.

COMPLY? YES ____ NO ____

1.0 CHASSIS

(continued)

1.8 TRANSMISSION

Allison 1000 EVS Series 5-Speed Automatic Transmission with Overdrive, Park Pawl, less PTO Gear and less Retarder. Oil Pan Plug to be magnetic. Transmission Oil is to be Synthetic with an Oil Filter mounted on the Transmission.

COMPLY? YES ____ NO ____

1.9 AXLE, FRONT

I-Beam Type, Dana Spicer with 8,000 lb capacity.

COMPLY? YES ____ NO ____

1.10 SUSPENSION, FRONT

7,000 LB Parabolic Spring, Taper Leaf with Shock Absorbers.

COMPLY? YES ____ NO ____

1.11 AXLE, REAR

Dana Spicer S110 Single Reduction, 13,500 lb capacity. 4.56 gear ratio with Locking Differential and a Magnetic Drain Plug.

COMPLY? YES ____ NO ____

1.12 SUSPENSION, REAR AIR

International Ride Optimized Suspension (IROS), 12,000 lb capacity with Shock Absorbers and Dual Leveling Valves. Suspension Air Control Valve Pressure Release Control Switch is to be mounted in the Cab. The System shall also relieve and rebuild air pressure, raising and lowering the rear entry height, when the Secondary Rear Patient Entry Door is opened and closed.

COMPLY? YES ____ NO ____

1.13 WHEELS AND TIRES

Seven (7) Goodyear 245/70R19.5 Uni-Steel, Load Range F, 12 ply Tires, G647 with highway tread on the front and rear painted steel wheels. The spare tire will be mounted in the left rear exterior compartment. Stainless steel wheel inserts with valve stem extensions will be provided. The valve stem extensions are to be steel braided lines that are held in place with stainless steel brackets. These brackets are to be located in such a way as to provide easy access to both the inside and outside rear tires valve stems for the checking of tire pressure and for the addition of air when required.

COMPLY? YES ____ NO ____

1.14 STEERING

Power steering with tilt steering column and cruise control.

COMPLY? YES ____ NO ____

1.0 CHASSIS

(continued)

1.15 **BRAKES**

Hydraulic Disc Split System with Automatic Adjustment and Four-Channel ABS. "Diamond Life" 15.00" x 1.44" rotors with dual 68mm diameter pistons.

COMPLY? YES ____ NO ____

1.16 **BRAKE, PARKING**

Bosch DSSA Type, 12" x 3", Air Actuated Parking Brake Control. Brake Warning Indicator Light for Engaged Parking Brake.

COMPLY? YES ____ NO ____

1.17 **BATTERIES**

Three (3) International Maintenance Free Batteries with 2250CCA Total will be mounted in a Slide-Out Tray under the left side of the Cab enclosed in an aluminum box with built-in Cab Steps. The Batteries are to be wired parallel in OEM configuration that complies with KKK-A-1822-F requirements. Batteries will be wired so that all Batteries will always be used for starting. The Batteries shall be control by a Battery Disconnect Switch.

COMPLY? YES ____ NO ____

1.18 **BATTERY DISCONNECT SWITCH**

OEM lever operated positive type Battery Disconnect Switch mounted on the Cab floor to the left of the Driver's Seat Base.

COMPLY? YES ____ NO ____

1.19 **ALTERNATOR**

Single Leece-Neville 320 AMP Alternator with Self-Diagnostic Regulator System.

COMPLY? YES ____ NO ____

1.20 **STARTER SWITCH**

Electric Operated via an Ignition Key in the dash.

COMPLY? YES ____ NO ____

1.21 **AIR COMPRESSOR**

Bendix 13.2 CFM Capacity Compressor and Tank for Air Source on Hydraulic Chassis.

COMPLY? YES ____ NO ____

1.22 **AIR DRYER**

Bendix AD-9 Air Dryer with Heater.

COMPLY? YES ____ NO ____

1.0 CHASSIS

(continued)

1.23 FUELTANK

Single OEM 40 gallon capacity tank mounted between frame rails behind rear axle.

COMPLY? YES ____ NO ____

1.24 FUEL FILTER / WATER SEPARATOR

Thermostatic Fuel Temperature Controlled Electric Heater and Fuel Filter shall be provided.

COMPLY? YES ____ NO ____

1.25 GAUGES AND METERS

Speedometer, Odometer with Trip Miles, Engine Hour Meter with Trip Hours, Fault Code Readout, Tachometer, Fuel Gauge, Water Temperature, Oil Pressure, Voltmeter, Air Pressure, Ammeter, Dash Mounted Air Cleaner Restriction Gauge, Transmission Oil Temperature.

COMPLY? YES ____ NO ____

1.26 WARNING SYSTEM

Brake Warning Indicator Light for Engaged Parking Brake, Low Fuel, Low Oil Pressure, High Engine Coolant Temperature, Low Battery Voltage, and Low Washer Fluid Indicator.

COMPLY? YES ____ NO ____

1.27 LIGHTING, CHASSIS

Halogen Headlights with Daytime Running Lights, Five (5) LED Amber Clearance / Marker Lights Flush Mounted on the Cab.

COMPLY? YES ____ NO ____

1.28 HORN, ELECTRIC AND AIR

Electric Horns, two (2) and Grover Stutter Tone Air Horns, Air Solenoid operated, mounted one (1) each side of the Hood. Driver shall be able to activate both sets of horns with a switch mounted in the Steering Wheel. A second switch shall be located in the Instrument Panel close to the Passenger.

COMPLY? YES ____ NO ____

1.29 BACK-UP ALARM

Electric, 102 dba with auto reset.

COMPLY? YES ____ NO ____

1.0 CHASSIS

(continued)

1.30 WINDOWS AND LOCKS, CAB

OEM Power Operated Windows and Door Locks in both left and right doors. Tinted safety glass in all exterior windows. Door Locks are not to be activated automatically by road speed.

COMPLY? YES ____ NO ____

1.31 WINDSHIELD WIPERS

Two speed electric, with washer and adjustable intermittent cycle.

COMPLY? YES ____ NO ____

1.32 CRUISE CONTROL

Electronic Cruise Control with controls integral in the steering wheel.

COMPLY? YES ____ NO ____

1.33 SEATS, DRIVER AND PASSANGER

National 2000 Air Suspension High Back Seats with Integral Headrest, Vinyl, Inboard Mounted Fold-Down Armrests, Lumbar Support, 3-Point Lap and Shoulder Belt Type.

COMPLY? YES ____ NO ____

1.34 HEATER AND AIR CONDITIONING, CHASSIS

International Blend-Air with Integral Heater / Defroster with HVAC Fresh Air Filter. SD7 Auxiliary Air Conditioning Compressor for Supply to the Modular HVAC Unit.

COMPLY? YES ____ NO ____

1.35 MIRRORS, DRIVER'S

OEM rectangular 7.09" x 15.75" with Integral Convex Mirror, Power Adjustable, Heated Thermostatically Controlled Mirror Heads, LED Clearance Lights, Mounted on Breakaway type Brackets. Mirror Heads and Brackets to have a Bright Finish.

COMPLY? YES ____ NO ____

1.36 RUNNING BOARDS, CAB ENTRY STEPS

Heavy-duty aluminum diamond tread covers with integral steps will be installed over the fuel tank and battery box.

COMPLY? YES ____ NO ____

1.37 MUD FLAPS

Rubber Mud Flaps will be installed behind the front wheels to protect the chassis and module. Rubber Mud Flaps will be installed behind the dual rear wheels.

COMPLY? YES ____ NO ____

1.0 CHASSIS

(continued)

1.38 PAINT, CHASSIS

Base Coat / Clear Coat, Standard International Color. Wheels to be painted white.

COMPLY? YES ____ NO ____

1.39 TRIM, EXTERIOR CHASSIS

Fiberglass Tilting Front End, Dark Gray Front Grill, Full Width Chrome Plated Steel Front Bumper with License Plate Holder, Two (2) Frame Mounted Front Tow Hooks, Two (2) Chrome Towel Bar Type Grab Handles with Anti-Slip rubber Inserts on the left and right side.

COMPLY? YES ____ NO ____

1.40 TRIM, INTERIOR CHASSIS

Premium Interior Cab Trim, Reduced Sound Cab Insulation Package, Cab Interior Trim Panels (All Interior Sheet Metal is Covered), Molded Plastic Door Trim Panels with Storage Pocket on Driver Door, Black Rubber Floor Covering, Headliner Printed Cloth, Two (2) Sun Visors, Cab Dome Light, Courtesy Lights Two (2) Mounted Under Dash, Cigar Lighter, Coat Hook on Rear Wall Centered above Rear Pass Through Window, Grab Handle Mounted on "A" Pillar Passenger Side, Grab Handle Two (2) Mounted in Each Side of Cab on the "B" Pillar.

COMPLY? YES ____ NO ____

1.41 RADIO, CAB

AM/FM Stereo Radio with CD Player, Weather Band, Clock with AUX input

COMPLY? YES ____ NO ____

1.42 CONSOLE, OVERHEAD

Dual Storage Pockets with Retaining Nets, Auxiliary Visor, Reading Lights.

COMPLY? YES ____ NO ____

2.0 MODULE CONVERSION

2.1 DIMENSIONS, EXTERIOR

Overall vehicle length	288.75 inches
Overall vehicle height	108.5 inches
Overall module body length	168.0 inches
Overall module body height	91.0 inches
Overall module body width	96.0 inches

COMPLY? YES NO

2.2 DIMENSIONS, INTERIOR

Length forward door to rear door	164.0 inches
Width interior wall to wall	91.0 inches
Width of aisle	49.0 inches
Height floor to ceiling	71.75 inches
Loading height	36.0 inches raised, 31inches Dumped

COMPLY? YES NO

2.3 GENERAL CONSTRUCTION

The entire body will be a welded and **SEAMLESS** one-piece body. The entire perimeter and around all openings of the body shall be fully welded and ground smooth thus eliminating any joints or seams. The use of tongue and groove method of construction that requires the use of a seam sealer is not acceptable. This is to prevent the cracking of paint at these areas resulting in a buildup of road dirt and grime and the eventual development of corrosion along the tongue and groove seams.

COMPLY? YES NO

The aluminum skin, the roof and side panels, shall be permanently fastened to the framework using Lord 406/19 Acrylic Adhesive. Adhesive is applied to the sidewall skin to prevent warp age, oil canning and metal deflection associated with the welding of the sidewall skin to the structural framework. The use of double back adhesive tape is prohibited to eliminate the possibility of the adhesive tape failing to maintain a bond to the external skin.

COMPLY? YES NO

The body wall skin shall be of prime commercial quality .125" thick 3003 H14 corrosion resistant aluminum. All side and roof panels shall be .125" thick. The use of side and roof panels that are of a lesser thickness is strictly prohibited.

COMPLY? YES NO

All side panels and the roof panel shall be a single sheet of aluminum. Covering the sidewall, front, rear or roof of the exterior body with sectional pieces of aluminum panels is prohibited. This is to eliminate the necessity for joints or seams where these panels join.

COMPLY? YES NO

2.0 MODULE CONVERSION

(continued)

The wall and roof support framework shall be .125" 6061-T6 extruded aluminum box beams and extrusions spaced on 12" centers or less. There shall be no frame members spaced at a distance in excess of 12". The roof support framework shall additionally include .125" 6061-T6 extruded 1" x 2" aluminum box beams running the full length of the roof. The frame and skin shall be fully welded with no rivets.

COMPLY? YES ____ NO ____

The exterior of the body will be finished smooth with 45-degree **SEAMLESS** beveled extruded corners presenting a modern and dynamic appearance. The outer wall thickness of the extruded corners shall be .250" to provide additional protection at all corners. The body will be designed and built to provide impact and penetration resistance, with appropriate channel reinforcing to assure rigidity.

COMPLY? YES ____ NO ____

All parts of the body and attachments will be fastened together with rust resistant fasteners in a manner that will preclude loosening of any bolts and screws, and the cracking of welded joints. The exterior body panels will be made of not less than 0.125" thick metal and be reinforced at all points where equipment will be attached.

COMPLY? YES ____ NO ____

The body will be a bolted and welded structure. Welding will not however, be employed in the assembly of the body in a manner that will prevent the ready removal of any component part for service or repair.

COMPLY? YES ____ NO ____

In the assembly of the body, areas where steel is in contact with aluminum, there shall be rubber isolator pads installed. This pad provides corrosion and water resistance.

COMPLY? YES ____ NO ____

All fasteners, bolts, screws, etc used in the assembly of the body and all attachments shall be coated with the "ECK" brand corrosive protectant. Additionally, all exterior door hinges, both entry and compartment, are to be coated with "ECK" protectant prior to the installation of the door. This "ECK" coating is to be used in lieu of a gasket material behind the hinge to prevent the problems of gasket retention and deterioration.

COMPLY? YES ____ NO ____

2.0 MODULE CONVERSION
(continued)

2.4 **MOUNTING OF THE BODY**

The body sub-structure shall be fastened to the chassis frame with eight (8) rubber mounts (or pucks) and bolt assemblies. Outriggers, 3 1/2" x 3 1/2" x 1/4", shall be bolted to the outboard side of the frame using 5/8" grade eight (8) bolts. Butyl rubber shall be installed to separate the aluminum body from the steel substructure.

COMPLY? YES ____ NO ____

2.5 **ROOF**

The roof surface shall be **SEAMLESS** and **CROWNED** and of **ONE PIECE** of .125" aluminum (3003-H14). The use of any type of sealer or caulking material is strictly forbidden. There shall be no lip or protrusion on the roof that could result in the entrapment of any water or moisture.

COMPLY? YES ____ NO ____

The perimeter of the roof shall be constructed of 45-degree **SEAMLESS** beveled extrusions that eliminate any lip or protrusion providing a smooth finish. The outer wall thickness of the roof perimeter extrusions shall be .250" to provide additional protection at all perimeter corners.

COMPLY? YES ____ NO ____

The roof under structure will be fabricated from extruded aluminum box beams (6061-T6). The under structure will be constructed by welding 1" x 2" x .125" box beams lengthwise and by welding 2" x 2" x .125" box beams, spaced on 12" centers or less, crossways forming a cross sectional grid roof support framework. Corner gussets will be welded to the roof and sidewall support structure to enhance load-bearing characteristics. The complete roof will be treated with a sound-deadening barrier. The roof panel shall be fully perimeter welded and adhesive bonded to the roof under structure with Lord 406/19 Acrylic Adhesive. The use of skip or intermittent welding of the roof perimeter is unacceptable.

COMPLY? YES ____ NO ____

2.6 **SIDE WALLS**

The body sidewall skin shall be constructed of a single sheet of .125" aluminum (3003 H14). The sidewall under structure will be fabricated by welding 2" x 2" x .125" extruded aluminum box beams vertically, spaced no further than on 12" centers. The vertical tubing will join and be welded to roof supports (2" x 2" x .125" extruded aluminum box beams) to form an interlocking grid between the sidewall and the ceiling. The complete sides will be treated with a sound-deadening barrier. The body sidewall skin shall be fully welded around the entire perimeter and all body openings and adhesive bonded to the sidewall with Lord 406/19 Acrylic Adhesive.

COMPLY? YES ____ NO ____

2.0 MODULE CONVERSION

(continued)

All body openings shall be seamless. Body openings framed with tongue and groove style extrusions requiring the use of seam sealer will not be acceptable.

COMPLY? YES _____ NO _____

2.7 FLOOR SUB-STRUCTURE

The floor shall be at the lowest level permitted but not more than 33 inches from the ground when the air suspension is in the air relieved or "kneeling" position.

COMPLY? YES _____ NO _____

The floor sub-structure shall consist of two (2) 2" x 2" ¼" walls primary box beams running at the outer edge for the full length of the floor. There shall then be eighteen (18) 1 ½" x 1 ½" x ¼" walls primary box beams running the width of the floor and welded to the outer box beams. 2 Full-Length Plates measuring ¾" x 6" shall be welded to the under side of the 1 ½" x 1 ½" tubes, one left and one right. The outer edges of these plates shall be welded to the 2 x 2 primary box beams. These plates shall be bolted, via OEM rubber mounts, to gusseted steel brackets bolted to the OEM frame. There shall be fourteen (14) rubber mounts attaching the body to the frame.

COMPLY? YES _____ NO _____

2.8 EXTERIOR COMPARTMENT CONSTRUCTION

Compartments provided on the unit will be constructed as follows: The compartment floor will be fabricated of .125 diamond plate aluminum (3003-H14) and the ceiling and bulkheads of .100 diamond plate aluminum (3003-H14). All compartment floors will be reinforced with two 1x2 aluminum bars on the underside of the floor.

All exterior compartments will be sweep out style to provide for ease of cleaning. Drain holes are not desirable. All exterior compartments will be vented to provide for the displacement of air when closing doors. Vent louvers shall be installed on the vertical walls of the exterior compartments.

All exterior compartments shall be lighted when the compartment door is opened. Compartment lights will be flush mounted with wiring routed through the body eliminating any exposed wiring.

COMPLY? YES _____ NO _____

All exterior compartment shelving shall be "Pan" style aluminum shelves mounted on two (2) sets of uni-strut tracks at each end of the shelf providing infinite adjustment. Rubber matting is to be installed on the topside of all shelving.

COMPLY? YES _____ NO _____

2.9 DOORS

The corner of each door frame shall be ¼" Cast Aluminum inserted & welded to horizontal and vertical extrusions. This Cast part shall ensure superior strength as well as uniform fit & finish.

COMPLY? YES _____ NO _____

2.0 MODULE CONVERSION

(continued)

The door(s) of each compartment will be flush type (being on the level with adjacent body surface) and of **PAN FORMED / EXTRUDED DOUBLE BREAK** construction. The weather seal is to be mounted on the outer flange of the door with the latches and strikers mounted on the extruded second break inside the door opening. This door design eliminates exposure of the latches to the elements and prevents moisture from corroding the latch mechanisms.

COMPLY? YES ____ NO ____

All doors shall be constructed of .125 aluminum and 2 ½” thick.

COMPLY? YES ____ NO ____

The inner panel on all exterior compartment and entry doors will be fastened to the extruded door-frame and recessed into the door frame extrusion for a flush finish. Surface mounting of any interior door panels is not allowed. All fasteners used for the mounting of the interior panels are to have a rubber grommet affixed to the underside of the screw head to prevent the fastener screws from loosening and backing out of the extrusion. The interior door panels shall be readily removable for access to the interior of the door and the latching mechanism.

COMPLY? YES ____ NO ____

All doors shall be reinforced and cross-braced inside for increased strength allowing for the mounting of equipment on the door.

COMPLY? YES ____ NO ____

In order to facilitate adjustment and routine maintenance of door linkage rods and latches, all patient compartment entry doors shall have access ports. There is to be an access port above and one below each interior entry door handle of sufficient size to allow for the adjustment of the door linkage rods. Access ports shall also be provided for the lubrication of the slam latches located at the top and bottom of each entry door. All ports are to be covered with a friction type “plug-in” plastic cover that is readily removable.

COMPLY? YES ____ NO ____

The door latch assembly of each compartment will be an Eberhard Grabber 21100 series, two (2), point slam lock (206 rotary latch) of stainless steel construction. Door latch assemblies shall be “blind_mounted” eliminating any exposed mounting hardware on the exterior side of the latches. There is to be a rubber gasket between the exterior stainless steel latch assembly and the aluminum door to ensure the isolation of the two dissimilar metals.

The door linkage rods’ connecting the door handles and the rotary latches are to be threaded stainless steel rods. They shall be straight direct pull rods with no bends built into the rods allowed. Adjustments to the entry door linkage rods are to be provided by a turnbuckle located above and below and adjacent to each interior door handle.

COMPLY? YES ____ NO ____

2.0 MODULE CONVERSION

(continued)

All exterior doors are to be lockable via an “automotive style” lock with all compartment and patient compartment entry doors being keyed alike. The key shall be double sided for ease of insertion into the lock.

COMPLY? YES ____ NO ____

Door strikers shall be installed on the vertical compartment flanges, with the exception of double doors. There are to be two (2) pins per door, with the exception of the battery compartment door. All striker pins shall be fully adjustable from the exposed side. They will be grade 8.0 cadmium plated steel strikers with a “captive nut” for adjustment and so located as not to interfere with the sweep-out design of the compartment itself.

COMPLY? YES ____ NO ____

All compartment and entry doors shall have one-piece Stainless Steel doorsill protectors which will cover both surfaces of the body opening.

COMPLY? YES ____ NO ____

Each compartment and entry door is to have a full width aluminum drip rail mounted above each door. All drip rails are to be attached using double back adhesive tape. The use of screws, rivets, or any other form of metal attachment is not acceptable.

COMPLY? YES ____ NO ____

All compartment doors will be equipped with a gas strut door stay that holds the door at 90 degrees to the body when open. All gas struts are to be mounted in such a way as to allow for easy access in the event that replacement or repair is required.

COMPLY? YES ____ NO ____

There shall be a “dampening” devise installed within each gas strut for the purpose of preventing the “shock” that can occur when a gas strut is fully extended.

COMPLY? YES ____ NO ____

Each compartment door will be mounted with a continuous stainless steel hinge with a minimum pin diameter of (.250). Hinge Pin diameter of less than (.250) is unacceptable to ensure the long-term performance of the hinge in this extreme use application.

COMPLY? YES ____ NO ____

Each compartment opening is to be sealed with full perimeter 5/8” wide by 1/2” thick hollow core wiper seal. The seal is to be mounted on the doorframe out board of the striker pins and the door latches. This seal insures that each compartment will be dust and waterproof and that the striker pins and door latches will remain dry and clean.

COMPLY? YES ____ NO ____

2.0 MODULE CONVERSION
(continued)

All exterior compartment and patient compartment entry doors shall be insulated with a single layer of R-14.5 reflectics insulation. Additionally there shall be a single layer of 2" polystyrene insulation installed in each door.

COMPLY? YES ____ NO ____

Rear patient compartment doors shall be equipped with Cast Products "Grabber" hold-open devices. Side patient compartment door shall be equipped with Gas Strut door opening device.

Rear and side patient compartment doors shall have dark tinted safety glass windows encased in extruded aluminum frames. Each rear door shall have an 18.5" x 17.5" fixed window. The side door shall have an 18.5" x 17.5" slide opening window with screen and window lock.

Right side entry door opening: 68" H X 30" W
Rear entry door opening (double door): 61" H X 50" W

COMPLY? YES ____ NO ____

2.9.1 **LICENSE PLATE HOLDER**

Installed in the center of the rear kick plate above the rear step bumper there shall be a Cast Products license plate holder.

COMPLY? YES ____ NO ____

3.0 ELECTRICAL SYSTEM

3.1 **ELECTRICAL SERVICE PANEL**

All circuits shall be rated to carry at least 125% of its maximum load. Each circuit shall be protected by a manual reset circuit breaker. Each circuit that is rated more than three (3) amps shall be switched by use of a relay.

Circuit breakers and relays shall be mounted in plug-in, pull out sockets that are permanently mounted in a printed circuit board for durability, as well as weight and space savings. Relays should be a type that is readily accessible at any auto parts store. All circuit breakers shall be interchangeable with standard ATC automotive fuses so that system can be quickly returned to service.

COMPLY? YES ____ NO ____

3.2 **ELECTRICAL SERVICE PANEL ACCESS**

The electrical service panel shall be mounted behind the hinged action wall and shall be easily accessible by activating a single latch allowing the switch panel section to swing down.

COMPLY? YES ____ NO ____

3.3 LOAD MANAGEMENT SYSTEM

The distribution panel shall include a solid-state programmable load management system designed to sense when the charging system is not keeping up with the electrical demand. When this situation exists, the load manager will automatically shut down warning lights, one at a time in a programmed sequence until the electrical load is being sustained without discharge. This system only functions when the unit is in park.

COMPLY? YES ____ NO ____

3.4 SEQUENTIAL SWITCHING

A solid state Sequential Switching System shall be installed that will turn emergency lighting on/off in staggered 1/2-second intervals. This is done to eliminate subjecting the alternator to sudden load and unloading of electrical draw.

COMPLY? YES ____ NO ____

3.5 ELECTRICAL WIRING

All the vehicle's electrical equipment shall be served by circuits separate and distinct from the chassis electrical system. All electrical wiring shall be run in grease, oil, heat and moisture resistant looming. Harnesses shall be fastened with vinyl-clad clamps and grouted at any area they contact a metal edge.

Every load carrying wire shall be a minimum of 12-gauge, and shall be color-coded and heat embossed with its function every 6 inches.

There shall be at least a 6-inch service loop of wire at the point of attachment to each component. All electrical connections shall be machine crimped; the use of Scotch-locks is strictly prohibited.

COMPLY? YES ____ NO ____

3.0 ELECTRICAL SYSTEM

(continued)

3.6 12V DC OUTLETS

There shall be two (2) Cigar style 12V DC outlets, one located in the action area, and one in the right front bulkhead ALS compartment.

COMPLY? YES ____ NO ____

3.7 110V AC SYSTEM

There shall be a weatherproof 110V - 125V male receptacle rated at 20 amps with a spring-loaded cover assembly located on the front left corner of the module body for incoming 110-volt power. This receptacle shall be labeled. It shall be wired through one 15-amp circuit breaker. The circuit shall include two (2) 110-volt interior receptacles, one located in the action wall area and one in the ALS area. Both outlets shall illuminate per KKK-A-1822-F.

COMPLY? YES ____ NO ____

3.8 LIGHTING, EMERGENCY

The unit shall be equipped with a Vanner #3860 flasher and the following warning lights:

- 8) Whelen Series 9 x 7 red LED lights as follows:
 - 2) Facing forward
 - 2) Facing rearward
 - 2) Facing right
 - 2) Facing left
- 1) Whelen Series 9 x 7 clear LED light installed top center forward.
- 1) Whelen Series 9 x 7 amber LED light installed top center rearward.
- 4) Whelen Series 7 x 3 red LED lights as follows:
 - 2) Mounted in the grille.
 - 2) Mounted in the front fenders.

Circuit shall have a dual mode switch. "Primary" shall flash all lights. "Secondary" shall flash top red & amber lights only.

COMPLY? YES _____ NO _____

3.9 SCENE LIGHTS

There shall be four (4) Whelen Series 9 x 7 with 13-degree tilt built into the lenses mounted two (2) lights on the left side and two (2) lights on the right side. There shall be two (2) Whelen Series 9 x 7 with 13-degree tilt built into the lenses mounted on the rear. A separate switch on the driver's switch panel shall control each pair. In addition, the right side and rear scene lights shall activate when the right side or rear doors, respectfully, are open.

COMPLY? YES _____ NO _____

3.9.1 DOOR SWITCHING

Magnetic Door Switches shall be installed to activate door open, compartment open, dome and Scene Lights via a P.C. board.

COMPLY? YES _____ NO _____

3.0 ELECTRICAL SYSTEM

(Continued)

3.10 SIREN AND SPEAKERS

Siren shall be a Carson Mfg SA 400 with Wail, Yelp, Hi/Lo and Phaser sounds. Dual Whelen "Navistar Underpro Series" Siren Speakers shall be mounted under each end of the front bumper.

COMPLY? YES _____ NO _____

3.11 SPOTLIGHT

There shall be a "300,000 candle power" spotlight, with eight foot coiled cord and momentary switch, permanently wired into front console. A "Mic" style storage clip shall be provided.

COMPLY? YES _____ NO _____

3.12 LIGHTS, PATIENT COMPARTMENT

The ceiling headliner shall contain eight (8) Whelen High - Low intensity LED dome lights. The left and right banks of lights shall be switched separately. In addition, the left bank high mode can be switched from the drivers switch panel and will be activated by opening of the side or

rear entry doors. There shall be a timer switch installed in the right wall at the head of the squad bench. The timer switch will allow the middle bank of Dome Lights to turn on even when the master switch is in the off position.

In addition, a 10" LED light shall be in the action area.
COMPLY? YES _____ NO _____

3.13 CLOCK, PATIENT COMPARTMENT

A battery-powered clock with a sweep second hand shall be located above the rear patient entry doors and shall be visible from all seat locations.

COMPLY? YES _____ NO _____

3.14 SUCTION - ON BOARD

An Impact Model 324 self-contained suction system shall be provided and mounted on the back wall above the action area counter top just forward of the CPR Seat.

COMPLY? YES _____ NO _____

3.15 VENTILATION

A 138-CFM exhaust fan shall be mounted near the ceiling in the left rear of the patient compartment and shall be activated by a switch on the action wall.

COMPLY? YES _____ NO _____

3.0 ELECTRICAL SYSTEM

(continued)

3.16 SWITCH CONSOLE, DRIVER'S

There shall be a switch console mounted in the center of the cab floor between the seats in such a way as to not interfere with access to the dash yet easily accessible to the driver. The console shall be easily removable to allow access for service. There shall be space provided for the installation of radios below the switches and gauges. The switch panel shall be esthetically appealing and incorporate modern switches and gauges as follows:

- Master Switch
- Load Manager/Sequencer
- Primary/Secondary
- Siren/Horn
- Left Scene
- Rear Scene
- Right Scene
- Rear Dome Lights
- Back up Alarm Disable
- Silent Intercom Lights
- Door Ajar Light
- Compartment Open Light
- Voltmeter, Digital

COMPLY? YES _____ NO _____

3.16.1 LOW VOLTAGE ALARM

A Low Voltage Alarm shall sound when Voltage drops below 11.8 Volts for more than 120 seconds.

COMPLY? YES _____ NO _____

3.17 SWITCH CONSOLE, PATIENT COMPARTMENT

The following switches shall be in the rear control panel that shall be hinged for easy access to components. They shall be mounted in a single row at an angle facing the center of the cot and the squad bench.

- Left Dome High/Low
- Right Dome High/Low
- Silent Intercom Switches
- Driver Buzzer
- Exhaust Fan
- Checkout Lights
- Thermostat Control for Heat/A.C.
- Heat/A.C. Fan Control, 3 speed.

COMPLY? YES _____ NO _____

All switches in front and rear panels shall be positive contact rocker type switches that are permanently marked by function, illuminate when activated and backlit for night visibility. Each switch must be independently replaceable to eliminate the need for replacement of the entire switch panel in the event of a single switch failure.

COMPLY? YES _____ NO _____

4.0 PATIENT COMPARTMENT

4.1 FLOOR, PATIENT COMPARTMENT

The subfloor shall consist of .090" thick 3003 H14 corrosion resistant aluminum sealed watertight. Over the aluminum sub-floor there shall be single sheet of 3/4" exterior grade plywood that is caulked and sealed.

COMPLY? YES _____ NO _____

The floor is then to be covered with a single piece of commercial-grade, LON –PLATE non skid flooring which shall roll up the left wall and the squad bench approximately 3". Behind the linoleum at the base of the left wall and the squad bench, coving shall be installed providing a solid backing at the point of the bend in the floor. This coving shall run the full length of the left wall and the squad bench. Flooring shall be sealed at all edges to prevent water from seeping between the floor and cabinets.

COMPLY? YES _____ NO _____

A formed 6 inch, full width stainless steel floor protection strip shall be installed forward of the rear patient compartment door seal. Additionally antiskid tape, 2 inch wide, is to be laid the full width just inside the rear entry doors over the floor protection strip.

COMPLY? YES ____ NO ____

4.2 **CABINETS, INTERIOR**

All interior cabinets shall be built using 3/4" cabinet grade, solid core birch plywood. The use of plywood of any lesser quality or thickness is strictly prohibited.

COMPLY? YES ____ NO ____

All interior cabinets shall be constructed using wood screws. The use of staples or nails in the fastening of cabinet components is strictly prohibited.

COMPLY? YES ____ NO ____

Exposed cabinet surfaces, interior and exterior, are to be covered with "Wilsonart" laminate. All cabinets and counter tops shall be caulked and sealed. Cabinets shall incorporate 1-inch aluminum radius corners throughout and have generous padding to lessen the chance of injuries in the event of an accident. Sliding Plexiglas windows shall be 1/4" thick with full height extruded aluminum handles mounted in full perimeter slide track. Door catches shall be flush-mount slam-type positive latching.

COMPLY? YES ____ NO ____

4.2.1 **CABINETS, LEFT WALL**

Cabinets shall be designed as per drawings with a countertop for the attendant in the action area. The countertop is to have a laminated surface of the same laminate as used on the interior walls. The outer edge shall be trimmed with an aluminum T-Molding that is then capped with a black plastic trim-lock. Storage cabinets shall be located in the left rear, above the CPR seat, and above the action area. The cabinet over the action area will have the same angle front to back as the cabinet with the switch panel.

COMPLY? YES ____ NO ____

4.0 PATIENT COMPARTMENT
(continued)

The action wall shall house the technician's console, two oxygen outlets, vacuum outlet, aspirator collection bottle, climate control thermostat and fan control, one 12-volt connection and one lighted 110V duplex outlet. The upper action wall area, shall be hinged for ease of access.

COMPLY? YES ____ NO ____

4.2.2 **BULKHEAD CABINETS**

Cabinets shall be designed per drawings. The driver side cabinet shall incorporate a floor mounted climate control unit. Unit shall drain directly through the floor. Air in-take shall be at floor level, while output shall be ducted overhead, across the bulkhead cabinets. The return air shall be filtered. Directly above the climate control unit shall be a storage area.

A horizontal cabinet shall be located above the walk-thru at ceiling level. The right side shall have a locking drug box at ceiling level and inside/outside access cabinets below all the way to floor level with two adjustable shelves, and two solid full-length doors. The inside/outside cabinet shall be lighted at each shelf level with recessed lighting. The face of the overhead bulkhead cabinet doors shall be padded.

The bulkhead shall incorporate a pass through Plexiglas sliding window from the rear patient compartment to the front cab. This window shall be sealed and weather proof via a flexible rubber boot connection between the cab and the modular body.

COMPLY? YES ____ NO ____

4.2.3 SQUAD BENCH CABINETS

Two cabinets shall be mounted at the ceiling level directly over the entire length of the squad bench. They shall have sliding Plexiglas doors. There must be a minimum of 43" from the bottom of these cabinets to the top of the squad bench.

COMPLY? YES ____ NO ____

4.2.4 SQUAD BENCH

The squad bench base shall be constructed of .075" gauge stainless steel for strength and ruggedness. The lid shall be split into two sections. Each lid will have a gas strut hold open device and paddle style latches. The interior shall be lined with white Wilsonart laminate. Cushions shall be vacuum-formed seamless.

COMPLY? YES ____ NO ____

4.3 SEAT, EMT / ATTENDANT

An attendant seat shall be located at the head of the primary cot. It shall be a high back deluxe seamless vinyl captain's chair mounted on a pedestal. Seat belt shall be included for attendant safety.

COMPLY? YES ____ NO ____

4.0 PATIENT COMPARTMENT

(continued)

4.3.1 SEAT, CPR

A sidewall seat will be mounted in the center of the left wall with lift up seat for storage below. This seat will be comprised of three molded/contoured seamless vacuum formed vinyl cushions. A seat belt shall be provided for attendant safety. Cushions shall be vacuum-formed seamless. One inch cushions shall be installed on three sides of head area.

COMPLY? YES ____ NO ____

4.4 UPHOLSTERY

All door panels, seat cushions, and protective pads shall be constructed of fire-retardant foam, covered with a minimum of 40-ounce marine-grade vinyl.

COMPLY? YES ____ NO ____

All seat and back cushions in the patient compartment shall be vacuum-formed seamless.

COMPLY? YES ____ NO ____

4.5 HEADLINER

The headliner shall be constructed of padded white vinyl in three sections, with the center section being removable to gain access to wiring.

COMPLY? YES ____ NO ____

4.6 PANELING, INTERIOR

Exposed surfaces shall be mar, dent and scratch resistant. Walls shall be covered with high pressure Wilsonart laminate material.

COMPLY? YES ____ NO ____

4.7 GRAB RAIL, OVERHEAD

A full-length stainless steel handicap style 1 1/2" diameter grab rail shall be installed on patient compartment ceiling. This rail shall be capable of supporting a minimum of 300 pounds. This Rail shall be treated with Agion Anti-Bacterial coating.

COMPLY? YES ____ NO ____

4.8 GRAB HANDLES, DOORS

All entry doors will have a matching heavy duty stainless steel handicap style 1 1/2" "V" bar grab handle that will be securely mounted slightly below the window. These Bars shall be treated with Agion Anti-Bacterial Coating.

COMPLY? YES ____ NO ____

4.9 STAINLESS STEEL SIDE WALL

The lower left aisle wall shall be .060 stainless steel from action shelf down to floor. The stainless steel shall be installed after the coven floor is in place. The stainless steel will be installed over the edge of the rolled floor. This will eliminate the seam and possibility of fluid retention.

COMPLY? YES ____ NO ____

4.0 PATIENT COMPARTMENT

(continued)

4.10 COT MOUNT

A Ferno-Washington Model 175-4 cot fastener shall be installed.

COMPLY? YES ____ NO ____

4.11 INSULATION
INSULATION

The entire patient compartment, walls and ceiling, shall be blanketed with two layers of reflectics insulation. In between the two layers of reflectics insulation shall be a 2" polystyrene insulation to provide exceptional insulation and sound deadening qualities. To make certain the insulation stays in place, all insulation in the vertical walls is to be glued in place

COMPLY? YES ____ NO ____

All exterior compartment and patient compartment entry doors shall be insulated with a single layer of R-14.5 reflectics insulation. Additionally there shall be a single layer of 2" polystyrene

insulation installed in each door.

COMPLY? YES ____ NO ____

4.12 CLIMATE CONTROL

Rear climate control shall be floor mounted in driver side bulkhead cabinet to shorten refrigerant and anti-freeze hoses and eliminate vertical circulation. Condensation from high humid conditions shall drain directly through floor. Air intake shall be at floor level; output shall be at ceiling level with return air at floor level for increased airflow. Return air shall be filtered.

The unit shall be a Pro-Air with 32,000 BTU cooling capacity and a 35,000 BTU heating capacity. The blower motor shall have permanent magnets and be capable of delivering 630 CFM of airflow. It must be removable without removing the entire heat/cool unit and without disconnection of any coolant lines. The system is to include an external condenser mounted under body skirt line.

A thermostat shall control both heating and cooling with 3-speed manual fan control. The thermostat and fan control shall be located on the action wall.

COMPLY? YES ____ NO ____

4.13 SHARP'S CONTAINER

A lockable Sharp's container with mounting bracket shall be shipped loose.

COMPLY? YES ____ NO ____

4.14 OXYGEN OUTLETS

Oxygen system shall be plumbed with conductive hose from oxygen compartment to two Allied, Ohio style oxygen outlets in the action area, and a third over the cot mounted in the ceiling.

COMPLY? YES ____ NO ____

5.0 EXTERIOR BODY

5.1 REAR WHEEL WELL TRIM

The rear wheel wells shall be trimmed with Stainless Steel Fenderettes that shall be attached to the body with stainless steel fasteners. There shall be a gasket placed between the aluminum body and the stainless steel fenderette for isolation of the dissimilar metals.

COMPLY? YES ____ NO ____

5.2 RUB RAILS

There shall be bolt on clear anodized extrusion rub rails with a wall thickness of (.187). They shall run the full length of the body and be mounted at the base of each side of each side of the body. The rub rails shall be spaced ¼ inch from the body with Delrin spacers.

COMPLY? YES ____ NO ____

5.3 BUMPER, REAR STEP

The rear step assembly shall be constructed of 1 3/4" X 1 3/4" tubular steel frame bolted to the

chassis frame. The center section shall be non-skid grip strut that will allow mud and snow to fall through the step. The ends shall be constructed of diamond plate end caps with 18" X 4" X 4" heavy-duty rubber dock bumpers.

COMPLY? YES ____ NO ____

5.4 DOOR STEP, SIDE

There is to be a double side entry doorstep formed of aluminum diamond tread. This double step shall be flush sweep out style. This double step design is make for lower and easier entry through the curbside patient entry door. A single entry step is not desired.

COMPLY? YES ____ NO ____

Antiskid tape, 2 inch wide, is to be laid the full width of the step just inside the entry door. Additionally there shall be a formed 3-inch, full width stainless steel floor protection strip installed over the flooring at the top of the step. An LED step well light is to be installed on the forward vertical wall of the step well with the wiring to be pulled through the backside of the step well. The lower side of the step well shall be covered with Hushmat to reduce road noise.

COMPLY? YES ____ NO ____

5.5 STONE SHIELDS

Diamond plate stone shields shall be installed on the front edge of the module body directly behind the cab at skirt level. These shields shall extend up the front of the box approximately 16 inches.

COMPLY? YES ____ NO ____

5.0 EXTERIOR BODY

(continued)

5.6 EXTERIOR COMPARTMENT CONFIGURATION

NOTE: See Drawings for Exact Compartment Location and Dimensions

#1 OXYGEN / BACKBOARD COMPARTMENT

The left front (street side) exterior compartment shall contain a "Zico" nylon triple collar bracket to house one "M" size oxygen cylinder. The O2 tank is to be stored in the aft side of the compartment. There shall be an interior access door to allow the attendant to turn the oxygen tank valve on/off from the patient compartment. A separate O2 compartment light shall be provided for the purpose of viewing the tank O2 gauge and be switched on/off from the action panel. A wrench is to be provided for changing the tank regulator. This wrench is to be secured in the compartment with a cable and mounted to the compartment wall when not being used.

This compartment shall have an aluminum divider located between the O2 tank and the backboard storage side of the compartment. A shelf is to be installed from the divider to the compartment aft wall above the O2 bottle.

The forward side of the compartment is to provide storage for two (2) backboards and shall have rubber "nerf" strips, two (2) on the floor and two (2) on the back wall of the compartment, for the protection of the backboards. There shall be a seat belt style-retaining strap installed

for the purpose of securing the backboards.

On the forward wall of the compartment there shall be a removable panel approximately 8” square in size located opposite of the shoreline plug. This panel, when removed, provides access to the shoreline plug when service or replacement is required.

COMPLY? YES ____ NO ____

#2 GENERAL STORAGE COMPARTMENT

This compartment shall be located street side between the #1 compartment and the left side drive wheels and is to be used for general storage. There is to be a double door on this compartment with the secondary door latch being located on the inside of the door. For ease of opening, the secondary door latch shall be equipped with a stainless steel handle extension that is visible and readily accessible from the outside of the compartment.

There shall be a full width, full depth aluminum “pan” style storage shelf installed in the compartment. The shelf is to be mounted on two (2) sets of infinitely adjustable uni-strut tracks at each end of the shelf with rubber matting covering the topside of the shelf.

COMPLY? YES ____ NO ____

#4 SPARE TIRE COMPARTMENT

The left rear street side exterior compartment shall be for the storage of the spare tire. A bracket is to be installed in the compartment for the securing of the tire.

COMPLY? YES ____ NO ____

5.0 EXTERIOR BODY

(continued)

#5 CURBSIDE BACKBOARD COMPARTMENT

The right rear curb side exterior compartment shall be a single door full height vertical compartment for the purpose of storing a minimum of two (2) backboards, and miscellaneous other related equipment. The compartment is to be divided equally with an aluminum divider. There shall be a shelf located on the forward side of the divider approximately 5’ above the floor.

COMPLY? YES ____ NO ____

#6 GENERAL STORAGE COMPARTMENT

This compartment is to be located on the curbside forward of the #5 compartment and rearward of the right side rear wheels. This compartment is to provide exterior storage for miscellaneous equipment under the rear portion of the squad bench.

There shall be a full width, full depth aluminum “pan” style storage shelf installed in the compartment. The shelf is to be mounted on two (2) sets of infinitely adjustable uni-strut tracks at each end of the shelf with rubber matting covering the topside of the shelf.

COMPLY? YES ____ NO ____

#7 ALS IN/OUT ACCESS

There shall be a single full-length door located at the right front (curbside) allowing for In/Out access to the ALS interior cabinet.

COMPLY? YES ____ NO ____

5.7 LIGHTING, DOT

The vehicle shall be equipped with halogen daytime running headlights and two amber park/turn lights on the front. The Module Body shall have at least 11 LED clearance lights with each light having four (4) LED's and grounded via a ground wire". Each top front corner shall have amber lights mounted on the front and side of each corner. There shall be three red lights at the top rear center of the module. Each top rear corner shall have red lights mounted on the rear and side of each corner. There shall be five amber lights mounted on the front of the cab roof, three in the center and one on each end.

The rear of the module box shall have two Whelen 4" x 6" series amber LED arrow turn lights, two Whelen 4" x 6" series red LED tail/brake lights, two Whelen 4" x 6" series reverse lights. They will be mounted in chrome flanges on the modular body above the diamond plate in the above listed order top to bottom. Mounting of these lights shall be as far outboard on the rear of the module body as possible.

All lights shall be installed and located as per I.C.C. requirements.

COMPLY? YES ____ NO ____

6.0 BODY FINISH

6.1 PAINTING PROCEDURE

An extensive 12-step painting process is to be followed and strictly adhered to as follows:

Prior to paint all doors, chrome trim, lights, handles, steps, and all other attached equipment shall be removed to assure the paint process covers the entire body. No Weather-stripping will be attached to the body during the paint process.

COMPLY? YES ____ NO ____

The entire outside of the body shall be sanded with a minimum of 180 grit sandpaper and cleaned and deburred of all rough edges. The entire body shall then be wiped clean with PPG DX436 wax and grease remover prior to painting.

COMPLY? YES ____ NO ____

The body shall then be coated with (1) coat of PPG Delfleet Evolution F3993 Epoxy Primer followed by (2) coats of PPG Delfleet Evolution F3975 Urethane Primer. Once the primer has been applied the entire unit shall be baked at 150 degrees for a minimum of 30 minutes. The primer shall then be sanded prior to the application of the topcoat.

COMPLY? YES ____ NO ____

Once the application of the primer has been completed, a topcoat consisting of (2) coats of PPG Delfleet Evolution FBC Color Coat is applied followed by (2) coats of PPG Delfleet

Evolution F3921 Clear coat for a durable long lasting high gloss finish. The entire unit shall then be baked a second time at 160 degrees for a minimum of (45) minutes.

COMPLY? YES ____ NO ____

After the body paint procedure is completed a band shall be applied at midline forming a continuous band around the vehicle. This band is to be painted with (2) coats of PPG Delfleet Evolution FBC Color Coat followed by (2) coats of PPG Delfleet Evolution F3921 Clear Coat.

COMPLY? YES ____ NO ____

The final step shall then be to apply Rubberized undercoating to the underside of the cab and the body in strict adherence to Ford QVM guidelines and the KKK-1822- E Specification just prior to delivery.

COMPLY? YES ____ NO ____

Warranty shall be a full 5-year / 100,000 miles **NON-PRORATED** Modular Paint Warranty.

COMPLY? YES ____ NO ____

6.0 BODY FINISH
(continued)

6.2 DECALS, STAR-OF-LIFE

There shall be DOT approved decals provided as follows:

- 2) 6" Star-Of-Life
- 2) 12" Star-Of-Life
- 2) 16" Star-Of-Life
- 1) 36" Star-Of-Life
- 1) 4" Mirror-Image "AMBULANCE"
- 3) 6" AMBULANCE"

COMPLY? YES ____ NO ____

7.0 PAYLOAD

7.1 PAYLOAD

There shall be a minimum of 5600 lbs. of usable payload. Weight determination shall be made with standard unit, full complement of fuel, fluids and spare tire. Any optional equipment shall be deducted from payload.

COMPLY? YES ____ NO ____

8.0 MISCELLANEOUS EQUIPMENT

8.1 DECALS, NO SMOKING & OXYGEN EQUIPPED

There shall be two NO SMOKING and two OXYGEN EQUIPPED signs, one each in the cab and one each in the patient compartment.

COMPLY? YES ____ NO ____

8.2 I.V. HOLDERS

There shall be two recessed, swing-up dual I.V. bag holders mounted in patient compartment headliner. The holders shall be Cast Products # IV-2009 (KKK-1822-E Approved).

COMPLY? YES ____ NO ____

8.3 ANTENNA PRE-WIRE

One pre-wire antenna coaxial cable delivered to the drivers switch console. There shall be a raceway provided to be able to run radio cable from the cab to the patient compartment.

COMPLY? YES ____ NO ____

8.4 WIRING SCHEMATIC

There shall be a complete **SPECIFIC** wiring schematic showing all circuits, including optional equipment included in the owner's manual.

COMPLY? YES ____ NO ____

9.0 WARRANTY

9.1 WARRANTY

Three year / 36,000 mile Product Conversion Warranty
Six-year / 72,000 mile Electrical System Warranty
Five-year / 100,000 mile **NON-PRORATED** Modular Paint Warranty
LIFETIME Modular Body Structure Warranty

There shall be no pro-rating allowed for any portion of the above listed warranties.

COMPLY? YES ____ NO ____

10.0 REQUIREMENTS OF THE MANUFACTURER

10.1 KKK-A-1822-F CERTIFICATION

This unit shall meet all KKK-A-1822-F specifications and the manufacturer shall have current documentation of compliance with all KKK-A-1822-F standards.

COMPLY? YES ____ NO ____

10.2 AMD MEMBERSHIP

The manufacturer shall be a current member in good standing of the Ambulance Manufacturers Division (AMD) of the National Truck & Equipment Association (NTEA).

The unit shall be built in compliance with all AMD "Standards".

COMPLY? YES ____ NO ____

10.3 REMOUNTING AND REFURBISHING

The manufacturer must be capable of remounting and / or refurbishing used units. The facilities for such purpose shall be located at the manufacturer's primary location. The subcontracting of remounting and refurbishing is strictly prohibited.

COMPLY? YES ____ NO ____

POSITIVELY NO EXCEPTIONS ALLOWED TO SECTIONS 9.1 THROUGH 10.3