



Annette Grissom
Cooperative Purchasing Program Manager
Florida Sheriffs Association

February 14, 2018

Dear Annette,

I have reviewed both your communications regarding the Mack model name changes and the information that John Louer furnished to you to explain what happened. I understand the confusion on the FSA side, this was an inopportune time to make a model name change but we would have the same issue no matter when it was done.

Mack has had the "C" model for over thirty years, the CH (conventional highway) was the base tractor model for all that time. In model year 2000 we added the CX, an aerodynamic version offering better fuel economy. The "CX" was called the "Vision" in advertising material. The "Pinnacle" name was first used in 2003 and did not refer to a particular model of truck but to the frame system that was used by both platforms. As time went on more and more the Vision became referred to as the "Pinnacle".

That brings us to today. In late September of 2017 Mack introduced a new version of the "CX" model tractor. This version is named the "Anthem". The "CX" is no longer available. The model designation for this truck is "AN". The "CH" version, which only had an interior upgrade, kept the Pinnacle frame system and is now referred to as the Pinnacle, order code id is "PI". All of this happened after our FSA bid was filed, I had heard rumblings of the change and repeatedly asked them for the new name but it was refused for advertising purposes. The character and applications, the engines and all drive train components are unchanged. This is merely a name change.

I am attaching several support documents for your review. John Louers comments are correct in respect of the model year, all heavy truck model years must have the same emission level and those levels are set by the federal government to take effect on 1/1 of each year.

There was no intention to mislead or confuse the end user on the model name, this change was widely reported in industry publications and lauded for the improvements it offered. I will follow your calendar and file the appropriate information for these models for the next FSA bid. We look forward to selling this improved offering to our mutual customers.

Thank you for your attention to this matter and please advise if you need any additional information.

Thank you,

A handwritten signature in black ink, appearing to read "Michael J. Graber", written over a circular scribble.

Michael J. Graber
Sales Manager
Nextran Truck Centers Jacksonville

MJG:cmh

MACK ANTHEM™

OLD MODEL DESCRIPTIONS	NEW MODEL DESCRIPTIONS
CXU612 R - 4x2 DAYCAB	ANTHEM 42R DAYCAB
CXU612 R - 4x2 SLEEPER	ANTHEM 42R SLEEPER 48INCH ANTHEM 42R SLEEPER 70INCH
CXU612 T - 4x2 DAYCAB	ANTHEM 42T DAYCAB
CXU612 T - 4x2 SLEEPER	ANTHEM 42T SLEEPER 48INCH ANTHEM 42T SLEEPER 70INCH
CXU613 R - 6x4 DAYCAB	ANTHEM 64R DAYCAB
CXU613 R - 6x4 SLEEPER	ANTHEM 64R SLEEPER 48INCH ANTHEM 64R SLEEPER 70INCH
CXU613 T - 6x2 DAYCAB	ANTHEM 62T DAYCAB
CXU613 T - 6x2 SLEEPER	ANTHEM 62T SLEEPER 48INCH ANTHEM 62T SLEEPER 70INCH
CXU613 T - 6x4 DAYCAB	ANTHEM 64T DAYCAB
CXU613 T - 6x4 SLEEPER	ANTHEM 64T SLEEPER 48INCH ANTHEM 64T SLEEPER 70INCH
CXU614 T - 8X6 DAYCAB	ANTHEM 86T DAYCAB
CXU614 T - 8X6 SLEEPER	ANTHEM 86T SLEEPER 48INCH ANTHEM 86T SLEEPER 70INCH

LR & TERRAPRO®

OLD MODEL DESCRIPTIONS	NEW MODEL DESCRIPTIONS
LR612 R (11L) - 4x2 DAYCAB	LR 42R
LR613 R (11L) - 6x4 DAYCAB	LR 64R
LR632 R (9L CNG) - 4x2 DAYCAB	LR 42R G
LR633 R (9L CNG) - 6x4 DAYCAB	LR 64R G
MRU612 R (11L) - 4x2 DAYCAB	TERRAPRO 42R
MRU612 R (13L) - 4x2 DAYCAB	
MRU613 R (11L) - 6x4 DAYCAB	TERRAPRO 64R
MRU613 R (13L) - 6x4 DAYCAB	
MRU614 R - 8x4 DAYCAB	TERRAPRO 84R
MRU614 R - 8x6 DAYCAB	TERRAPRO 86R
MRU615 R - 10x4 DAYCAB	TERRAPRO 104R
MRU615 R - 10x6 DAYCAB	TERRAPRO 106R
MRU616 R - 12x6 DAYCAB	TERRAPRO 126R
MRU617 R - 14x6 DAYCAB	TERRAPRO 146R
MRU632 R (9L CNG) - 4x2 DAYCAB	TERRAPRO 42R G
MRU633 R (9L CNG) - 6x4 DAYCAB	TERRAPRO 64R G

GRANITE®

OLD MODEL DESCRIPTIONS	NEW MODEL DESCRIPTIONS
GU432 R (9L) - 4x2 DAYCAB	GRANITE 42FR MHD
GU433 R (9L) - 6x4 DAYCAB	GRANITE 64FR MHD
GU532 R (9L) - 4x2 DAYCAB	GRANITE 42BR MHD
GU533 R (9L) - 6x4 DAYCAB	GRANITE 64BR MHD
GU712 R - 4x2 DAYCAB	GRANITE 42FR
GU713 R - 6x4 DAYCAB	GRANITE 64FR
GU713 R - 6x4 SLEEPER	
GU713 T - 6x4 DAYCAB	GRANITE 64FT
GU713 T - 6x4 SLEEPER	
GU714 R - 8x4 DAYCAB	GRANITE 84FR
GU714 R - 8X6 DAYCAB	GRANITE 86FR
GU714 R - 8X6 SLEEPER	
GU714 T - 8X6 DAYCAB	GRANITE 86FT
GU714 T - 8X6 SLEEPER	
GU812 R - 4x2 DAYCAB	GRANITE 42BR
GU813 R - 6x4 DAYCAB	GRANITE 64BR
GU813 R - 6x4 SLEEPER	
GU813 T - 6x4 DAYCAB	GRANITE 64BT
GU813 T - 6x4 SLEEPER	
GU814 R - 8X6 DAYCAB	GRANITE 86BR
GU814 R - 8X6 SLEEPER	
GU814 T - 8X6 DAYCAB	GRANITE 86BT
GU814 T - 8X6 SLEEPER	

PINNACLE™

OLD MODEL DESCRIPTIONS	NEW MODEL DESCRIPTIONS
CHU612 R (13L) - 4x2 DAYCAB	PINNACLE 42R DAYCAB
CHU612 T (13L) - 4x2 DAYCAB	PINNACLE 42T DAYCAB
CHU612 T (13L) - 4x2 SLEEPER	PINNACLE 42T SLEEPER 48INCH PINNACLE 42T SLEEPER 70INCH
CHU613 R (13L) - 6x4 DAYCAB	PINNACLE 64R DAYCAB
CHU613 R (13L) - 6x4 SLEEPER	PINNACLE 64R SLEEPER 48INCH PINNACLE 64R SLEEPER 70INCH
CHU613 T (13L) - 6x4 DAYCAB	PINNACLE 64T DAYCAB
CHU613 T (13L) - 6x4 SLEEPER	PINNACLE 64T SLEEPER 48INCH PINNACLE 64T SLEEPER 70INCH
CHU614 T (13L) - 8X6 DAYCAB	PINNACLE 86T DAYCAB
CHU614 T (13L) - 8X6 SLEEPER	PINNACLE 86T SLEEPER 48INCH PINNACLE 86T SLEEPER 70INCH

NEW MODEL DESCRIPTION CROSS REFERENCE CHART

BASIC FORMAT Model Name, Axle Arrangement, Axle Forward or Axle Back (Granite Models), Truck or Tractor, Cab Configuration

KEY **F** Axle Forward **B** Axle Back **T** Tractor **R** Rigid (Truck) **G** Natural Gas **MHD** Medium Heavy Duty w/ 9L Cummins **X** Export Model
Not shown, basic format applies



GRANITE MEDIUM HEAVY DUTY (MHD) AXLE FORWARD

GRF9

Conventional Cab, Cornerstone Chassis, 4 x 2 or 6 x 4, Truck

Cummins ISL9 Engine – 122.5” Bumper to Back of Cab with Extended Bumper

GRANITE MEDIUM HEAVY DUTY (MHD) AXLE BACK

GRB9

Conventional Cab, Cornerstone Chassis, 4 x 2 or 6 x 4, Truck

Cummins ISL9 Engine – 122.5” Bumper to Back of Cab with Extended Bumper

LR

LR

Low Entry Tilt Cab, Dual Control, Right-Hand Low Entry Stand-Up Operating Position,

4 x 2 or 6 x 4, Refuse Service Truck, Mack MP7 or Cummins ISL G Engines,

64.6” Bumper to Back of Cab with Extended Bumper

TERRAPRO CABOVER

TE

Low Cab Forward (Cab-Over-Engine) Tilt Cab, 4 x 2 and 6 x 4, Truck,

Refuse or Construction Service, Mack MP7, MP8 or Cummins ISL G Engines,

63” Bumper to Back of Cab with Extended Bumper

TERRAPRO CABOVER EXPORT

TEX

Low Cab Forward (Cab-Over-Engine) Tilt Cab, 4 x 2 and 6 x 4, Truck,

Refuse or Construction Service, Mack MP7, MP8 or Cummins ISL G Engines,

63” Bumper to Back of Cab with Extended Bumper



MODEL IDENTIFICATION SYSTEM

VEHICLE MODELS

PREFIX CHARACTERS OF VEHICLE MODEL NOMENCLATURE

Vocational Vehicle Series

GRANITE AXLE FORWARD

GRF

Conventional Cab, Cornerstone Chassis, 4 x 2, 6 x 4, or 8 x 6, Truck or Truck Tractor

Mack MP7 or MP8 Engines – 122.5” Bumper to Back of Cab with Extended Bumper

GRANITE AXLE BACK

GRB

Conventional Cab, Cornerstone Chassis, 4 x 2, 6 x 4, or 8 x 6, Truck or Truck Tractor

Mack MP7 or MP8 Engines – 122.5” Bumper to Back of Cab with Extended Bumper

GRANITE AXLE BACK EXPORT

GRBX

Conventional Cab, Cornerstone Chassis, 4 x 2, or 6 x 4, Truck or Truck Tractor

Mack MP8 Engines – 122.5” Bumper to Back of Cab with Extended Bumper

Highway Vehicle Series

ANTHEM AXLE BACK

AN

**Conventional Cab, Advantage Chassis, 4 x 2, 6 x 2, 6 x 4 or 8 x 6, Truck or
Truck Tractor, Mack MP7, MP8 or Cummins ISX12 G Engines,
117.9" Bumper to Back of Cab with Flush Bumper**

ANTHEM AXLE BACK - EXPORT

ANX

**Conventional Cab, Advantage Chassis, 4 x 2 or 6 x 4, Truck or
Truck Tractor, Mack MP8 or Cummins ISX12 G Engines,
117.9" Bumper to Back of Cab with Flush Bumper**

PINNACLE AXLE FORWARD

PI

**Conventional Cab, Advantage Chassis, 4 x 2, 6 x 4 or 8 x 6, Truck or
Truck Tractor, Mack MP8 Engines, 117.3" Bumper to Back of Cab with Flush Bumper**

FIRST NUMERICAL CHARACTER OF VEHICLE MODEL NOMENCLATURE

NUMBER OF WHEEL ENDS

4..... 4 Wheel Ends

6..... 6 Wheel Ends

8..... 8 Wheel Ends

SECOND NUMERICAL CHARACTER OF VEHICLE MODEL NOMENCLATURE

NUMBER OF DRIVEN WHEEL ENDS

2.....2 Driven Wheel Ends

4.....4 Driven Wheel Ends

SUFFIX* OF VEHICLE MODEL NOMENCLATURE

B.....Axle Back

F.....Axle Forward

X..... Export to other than Canada, the U.S. and its Territories

T..... Tractor

R.....Rigid (Truck)

E.....Gas

MACK VEHICLE MODEL EXAMPLE

GR64FT

GR..... Granite Conventional Cab

6.....6 Wheel Ends

4.....4 Driven Wheel Ends

F..... Axle Forward

T..... Tractor

MACK ENGINE MODELS

(Example: MP7-325M)

FIRST & SECOND CHARACTERS OF ENGINE MODEL NOMENCLATURE

MP.....Mack Power

THIRD CHARACTER (and sometimes FOURTH) OF ENGINE MODEL NOMENCLATURE

Engine's cubic inch displacement rounded to the nearest 100 cubic inches, and then divided by 100, followed by a dash (-)

THREE CHARACTERS FOLLOWING DASH (-) OF ENGINE MODEL NOMENCLATURE

Indicates the peak horsepower

SUFFIX CHARACTER OF ENGINE MODEL NOMENCLATURE

A.....Maxidyne – Special Torque Rise for Allison 3000 Series Transmission

E.....Econodyne – Conventional Torque Rise – Highway Application

C..... MaxiCruise – High Torque Rise – Highway or Vocational Application

M..... Maxidyne – High Torque Rise – Vocational Application

R..... MaxiCruise – High Torque Rise – Refuse Application

SE.....Super Econodyne – Conventional Torque Rise
– Highway Application (Optimized)

MACK ENGINE MODEL EXAMPLE

MP8-505C

MP..... Mack Power

8.....Approximate Cubic Inch Displacement in Hundreds

505..... Peak Horsepower

C..... MaxiCruise

MACK AUTOMATED TRANSMISSION MODELS

(Example: TMD12AOF-HD)

PREFIX CHARACTER OF AUTOMATED TRANSMISSION MODEL NOMENCLATURE

T..... Transmission

FIRST & SECOND CHARACTER S OF AUTOMATED TRANSMISSION MODEL NOMENCLATURE

MD..... mDRIVE Transmission Series

THIRD & FOURTH CHARACTERS OF AUTOMATED TRANSMISSION MODEL NOMENCLATURE

Indicates the number of forward speeds

FIFTH CHARACTER OF AUTOMATED TRANSMISSION MODEL NOMENCLATURE

A..... Automated Manual

SIXTH CHARACTER OF AUTOMATED TRANSMISSION MODEL NOMENCLATURE

D..... Direct Drive

O..... Overdrive

SEVENTH CHARACTER OF AUTOMATED TRANSMISSION MODEL NOMENCLATURE

F..... GHG17 Compatible

SUFFIX CHARACTERS OF AUTOMATED TRANSMISSION MODEL NOMENCLATURE:

HD..... Heavy Duty

MACK AUTOMATED MANUAL TRANSMISSION MODEL EXAMPLE

TMD12AOF-HD

T..... Transmission

MD..... mDRIVE Series

12..... 12 Forward Speeds

A..... Automated Manual

O..... Overdrive

F..... GHG17 Compatible

HD..... Heavy Duty

MACK MANUAL TRANSMISSION MODELS

(Example: T310ME21)

FIRST CHARACTER OF MANUAL TRANSMISSION MODEL NOMENCLATURE

T..... Transmission

SECOND CHARACTER OF MANUAL TRANSMISSION MODEL NOMENCLATURE

3..... Transmission Series in Hundreds

THIRD & FOURTH CHARACTERS OF MANUAL TRANSMISSION MODEL NOMENCLATURE

Represent the number of Forward Speeds, e.g., "09" in the case of 9 speeds

SUFFIX CHARACTER(S) OF MANUAL TRANSMISSION MODEL NOMENCLATURE

E..... Extended Tail Shaft

L..... Very Low Forward Ratio

M..... Multi Speed Reverse (More Than One Reverse Speed)

R..... Very Low Reverse Ratio

21..... Maximum Torque Rating in Hundreds of Pound Feet

MACK MANUAL TRANSMISSION MODEL EXAMPLE

T310ME21

T..... Transmission

3..... 300 Series

10..... 10 Forward Speeds

M..... Multi Speed Reverse

E..... Extended Tail Shaft

21..... Maximum Torque Rating in Hundreds of Pound Feet

MACK FRONT AXLE MODELS

(Example: FXL12)

FIRST, SECOND & THIRD CHARACTERS OF FRONT AXLE MODEL NOMENCLATURE

FXL..... Front Axle, Non-Driving, Unitized Wheel Hubs

FOURTH & FIFTH CHARACTERS OF FRONT AXLE MODEL NOMENCLATURE

Indicates the ground load rating in thousands of pounds

MACK FRONT AXLE MODEL EXAMPLE

FXL12

FXL..... Front Axle, Non-Driving, with Unitized Wheel Hubs

12..... 12,000 Pound Ground Load Rating

MACK SINGLE REAR AXLE MODELS

(Example: RA23R)

FIRST & SECOND CHARACTERS OF SINGLE REAR AXLE MODEL NOMENCLATURE

RA..... Rear Axle, Dual Reduction, Top Mounted Carrier

THIRD & FOURTH CHARACTERS OF SINGLE REAR AXLE MODEL NOMENCLATURE

Indicates the ground load rating in thousands of pounds

SUFFIX CHARACTER OF SINGLE REAR AXLE MODEL NOMENCLATURE

R..... "R" Series Wheel Ends

MACK SINGLE REAR AXLE MODEL EXAMPLE

RA23R

RA.....Rear Axle, Dual Reduction, Top Mounted Carrier

23..... 23,000 Pound Ground Load Rating

R..... "R" Series Wheel Ends

MACK TANDEM REAR DRIVE AXLES MODELS

(Example: S462R)

FIRST CHARACTER OF TANDEM REAR AXLES MODEL NOMENCLATURE

S..... Tandem Axles, Dual Reduction, Top Mounted Carriers

(NOTE: In a very limited number of cases, "SB" is used to indicate axles approved for use in a Boost-A-Load Application)

SECOND & THIRD CHARACTERS OF TANDEM REAR DRIVE AXLES MODEL NOMENCLATURE

Indicates the ground load rating in thousands of pounds

FOURTH CHARACTER OF TANDEM REAR AXLE DRIVE AXLES MODEL NOMENCLATURE

0..... Steel Fabricated Housing

2..... Cast Ductile Housing

SUFFIX CHARACTER OF TANDEM REAR DRIVE AXLES MODEL NOMENCLATURE

R..... "R" Series Wheel Ends

MACK TANDEM REAR DRIVE AXLES MODEL EXAMPLE

S462R

S..... Tandem Axles, Dual Reduction, Top Mounted Carriers

46..... 46,000 Pound Ground Load Rating

2..... Cast Ductile Housing

R..... "R" Series Wheel Ends

MACK CARRIER MODELS

(Example: CRDP1501)

PREFIX LETTERS CONTAINED IN CARRIER NOMENCLATURE:

First, Second, and Third Letters

CRD Carrier, Dual Reduction

Fourth Letter

P Inter-Axle Power Divider Lockout

NUMBERS CONTAINED IN CARRIER NOMENCLATURE:

Digits 1, 2, 3

Numerical Identification of carrier's maximum weight capacity, (Mack 65K axles with 95/96 carriers do not follow the new nomenclature)

Fourth Digit

1 Inter-Wheel Power Divider (Mechanical)

MACK CARRIER EXAMPLE:

CRDP1501/1511

CRD.....Carrier, Dual Reduction

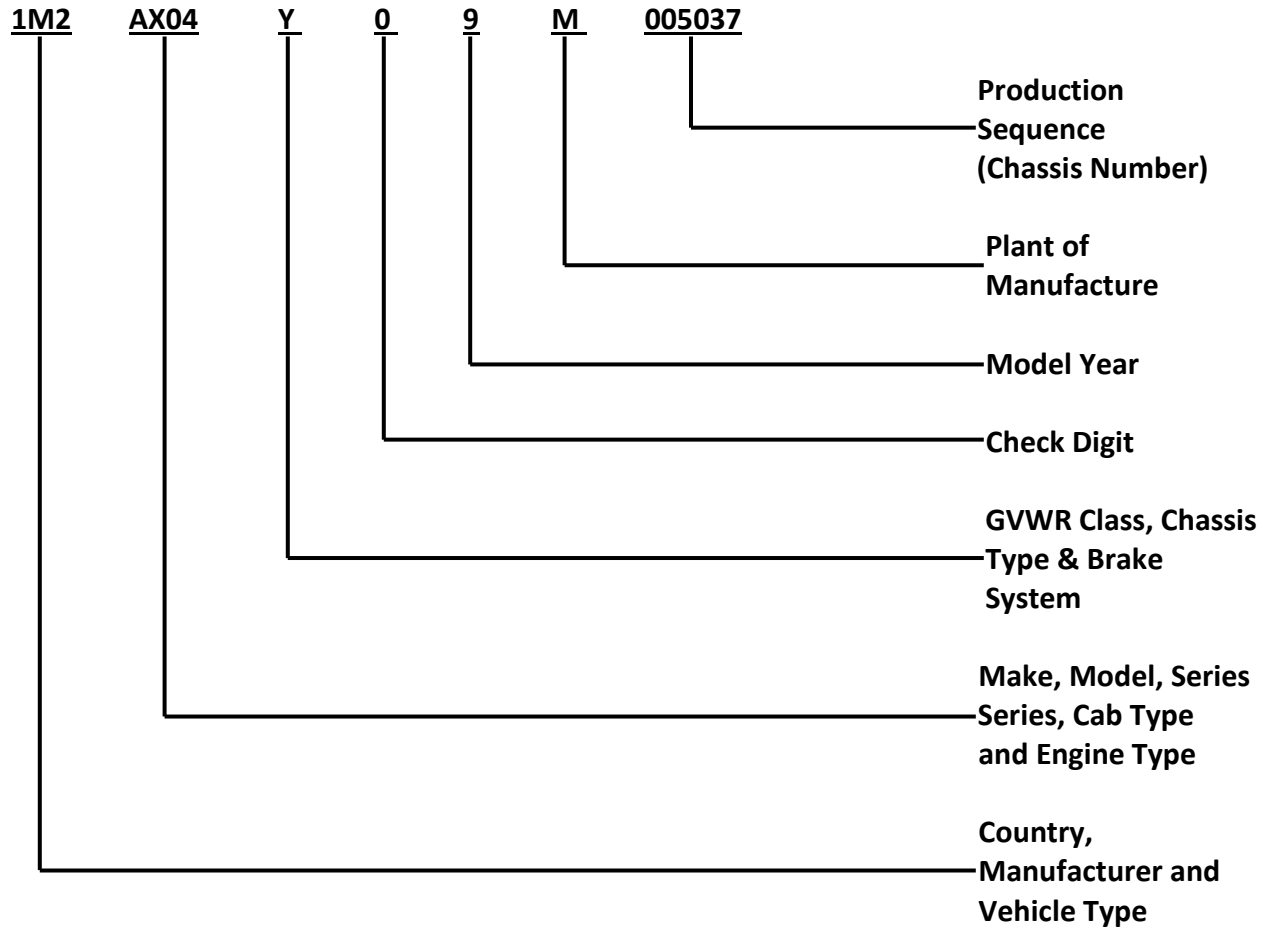
P.....Inter-Axle Power Divider Lockout

150/151.....150,000 Pounds Maximum Gross Combination Weight

1.....Inter-Wheel Power Divider (Mechanical)

VEHICLE IDENTIFICATION NUMBERS:

Federal regulation requires that all vehicle manufacturers standardize on a seventeen character (consisting of numbers and letters) Vehicle Identification Number (VIN) for all vehicles produced on and after September 1, 1980. The vehicle will be stamped with a Federal VIN that will be similar in format to the following sample:





MACK

PI64T



**BIGGER
THAN IRON**

STANDARD POWERTRAIN SPECIFICATIONS

ENGINE: MACK MP7-345C

Peak Horsepower - 345 HP at 1400-1700 RPM
Horsepower - 295 HP at 2000 Gov. RPM
Max. Torque - 1360 lb. ft. at 1000-1300 RPM
V-MAC IV - Total Vehicle Electronics
Air Compressor - Meritor/Wabco 318 (18.7 CFM)
Air Cleaner - 11" Single Element
Alternator - Delco 12V 130A (24SI)
Batteries - (3) Mack 12V 650/1950 CCA Threaded Stud Type
Coolant Protection: -34 degrees F (-37 C)
Mack Coolant Conditioner
ClearTech One DPF/SCR Emission System
Mack PowerLeash Engine Brake
Silicone Engine Hoses and Tubing
Poly-V Fan Belt with Automatic Tensioner
Fan Drive: Electronically Modulated Multi-Speed Viscous
Flywheel Housing - Aluminum (Lightweight)
Mack Fuel/Water Separator with Manual Drain Valve
Radiator - Aluminum Core
Starter - Delco 12V 39MT-MTX
Electronic Starter Interlock

TRANSMISSION: MACK mDRIVE TMD12AFO

12-Speed, Ratios: 11.73 Low - 0.78 High
Overdrive
Clutch - Single Plate 17" Organic Material
Transmission Bell Housing - Aluminum
Transmission Oil Cooler - mDRIVE Gear Box Mounted,
Water to Oil Cooler
Grade Gripper
Mackcellerator
Main Driveline - Meritor RPL25 Series with Permalube U-Joints

REAR AXLE: MERITOR MT-40-14X

40,000 Pound Capacity
Suspension - Maxlite 40EZ Air Suspension
40,000 Pound Rating
Tires - 295/75R22.5 (Low Profile)
Carrier - Malleable Housing
Wheels - Aluminum Disc, 22.5" x 8.25",
10-Hole, Hub Piloted
Hub Material - Aluminum Preset w/ Integrated
Spindle Nut
Brakes - Bendix 16.5" x 7"
Brake Drums - Cast Outboard Mounted
Premium Rear Wheel Seals
Slack Adjusters - Automatic
Spring Brake Chambers - 30/30 Double
Diaphragm Type, Mechanical
Spring Release
Shock Absorbers - (4) Mounted on Forward
and Rear Axles Each Side

FRONT AXLE: MACK FXL12

12,000 Pound Capacity
Suspension - Mack Taperleaf Springs,
12,000 Pound Rating, (2 Springs)
Tires - 295/75R22.5 (Low Profile)
Wheels - Aluminum Disc, 22.5" x 8.25",
10-Hole, Hub Piloted
Hub Material - Aluminum
Integrated Front Wheel Seals
Brakes - Bendix 15" x 5"
Brake Drums - Cast Outboard Mounted
Shock Absorbers - Double Acting Type
Slack Adjusters - Automatic
Steering - TAS65 TRW Integral Power Steering

STANDARD CAB INTERIOR/EXTERIOR SPECIFICATIONS

CAB: CONVENTIONAL

Air Conditioning with Integral Heater
Cab Mounting - 4 Point, Air Bags
and Shocks at Rear
12 Volt and USB Outlets
Coat Hook
Co-Pilot Driver Display with
GuardDog Maintenance, Stalk Controls
Cup Holders
Dome Lamps - 2RH / 2LH
Galvanized Steel Visibility Doors
Door Trim - Padded Armrests and Map Pockets
Floor Mats - Polyurethane
Gauges - Air Pressure (Primary and Secondary)
Engine Coolant Temperature, Engine Oil
Pressure, Speedometer, Tachometer,
Fuel Level, DEF Level
Optional Gauges - Exhaust Pyrometer, Boost
Pressure, Transmission Oil Temperature,
Engine Oil Temperature, Air Application
Grab Handles, Exterior - RH & LH Behind Door
Hood - DCPD Material, Insulated
Horn - Electric, Single Tone
Identification and Clearance Lights (5)
Instrument Panel - Gunmetal Trim
Interior Trim: Standard - Steel Gray

Keys - (2) Keyed at Random
Key Type Starter Switch
Low Pressure Indicator Light and Buzzer
Exterior Mirrors - RH & LH Aerodynamic
Overhead Console with Storage Compartments
Parking Brake "On" Indicator Light
AM/FM Premium Stereo, CD Player, MP3
Weather Band, Bluetooth
CB Connections - 5 way Binding Posts
Driver Seat - High Back, 1 Chamber Lumbar,
Air Suspension
Rider Seat - High Back, Non-Suspension
Seat Belts - Lap and Shoulder
Steering Column - Tilt and Telescopic
Steering Wheel - Urethane Foam Grip,
Gunmetal Spokes
Rear Storage Pouch
Right Hand Door Peep Window
Sunvisors - Interior, RH & LH
Window Controls - Power
Windshield - Tinted, 2 Piece
Cab Glass - Tinted
Windshield Wipers - 2 Speed Electric Motor
with Intermittent Feature
Paint Color - Mack White (Cab, Hood, and
Fenders), Mack Black (Chassis and
Running Gear)

ADDITIONAL STANDARD SPECIFICATIONS

AIR/BRAKE

Dual Air Brake System
Air Dryer - 1200P w/ Coalescing Filter
Air Reservoirs - Steel
Electronic Stability Control
Parking Brake Control - 2 Valve System, Trailer
Supply and Tractor-Trailer Park
Electric Plug Holder (Includes Glad Hand Storage)
Hand Control Valve for Trailer Brakes
Hose Tender - Pogo Stick, Chassis Mounted
Manual Drain Valve - Lanyard Control on Supply
Tank
Trailer Connection Package - Semi
Trailer Air Hoses & Electric Cord - 12' Straight Type
Trailer Receptacle - (7) Wire Mounted on Back of Cab

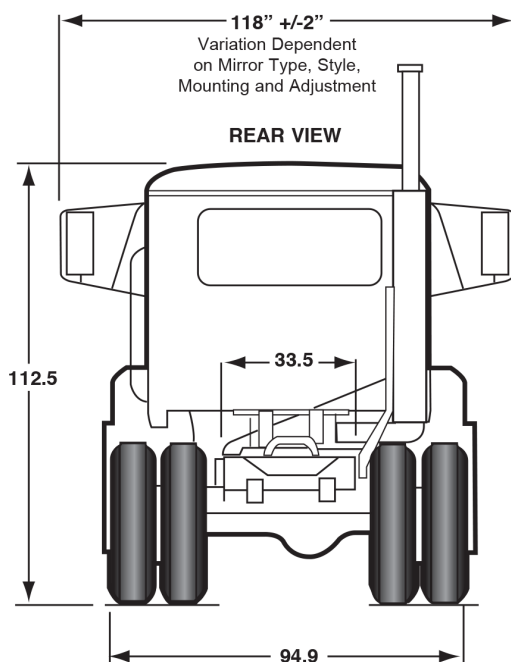
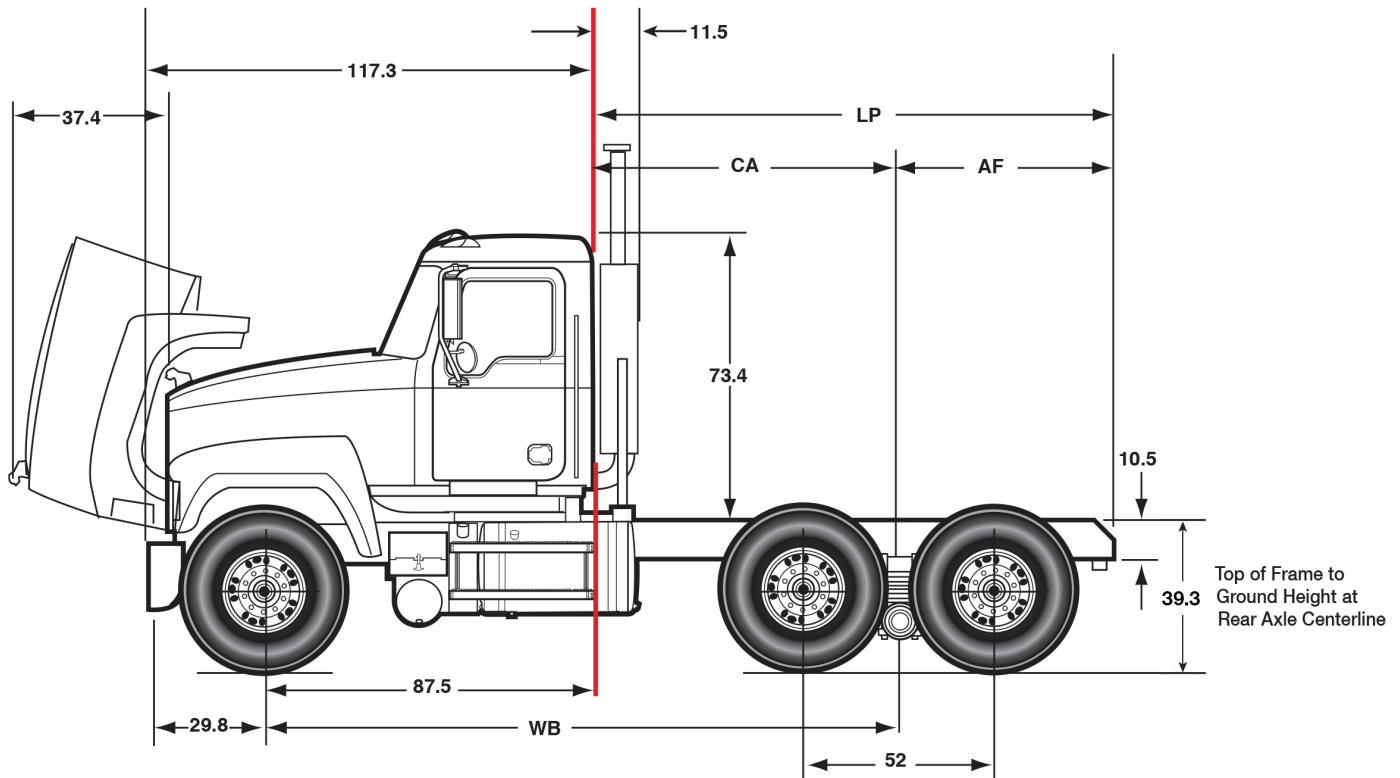
ELECTRICAL

12 Volt Electrical System
Battery Box - Steel with Molded Plastic Cover
Courtesy Light Switch - Headlamp and Clearance
GuardDog connect Services
Daytime Running Lights
Electric Circuit Protection Package
Waterproof Electrical Connections
Headlights - Flush Mounted LED Lights
Rear Lighting - (2) Combination Stop, Tail,
Directional, and Back-Up Lights
Triples Trailer Electrical Package
Solid State Turn Signal Flasher

PI64T



STANDARD CHASSIS DIMENSIONS



FRAME EQUIPMENT/FUEL TANKS

- Frame Rail w/out Liner – 10.47" x 3.54" x .24" Steel
- Section Modulus – 11.6 in³
- RBM (per rail) – 1,390,000 lb. in.
- Front Bumper – Stainless Steel Clad Aluminum Flush Mounted
- Bumper to Back of Cab (BBC) – 117"
- Crossmembers – Steel/Rear Crossmembers – Boxed and Tapered
- Fifth Wheel – Air Slide LH Release, Bolt to Outboard Mtg. Angles
- Tapered and Flanged Rail Ends – 28°
- Front Tow Device – (2) Clevis
- Fuel Tanks – 93 Gallon LH & RH, 26" dia. Aluminum
- Fuel Lines – Dual Draw & Return, Material – Nylon Tube
- Diesel Exhaust Fluid (DEF) Tank - 18.4 Gallon, 26" Diameter Frame Mounted on Left Side with Painted Cover

STANDARD WHEELBASE/LOAD PLATFORM

For standard wheelbase and load platform information refer to your current version of MSS

AVAILABLE DRIVELINE COMPONENTS

MP7 ENGINES

MODEL	HORSEPOWER / TORQUE
MP7-355A	355 HP [265kW] @ 1500-1800 RPM 1360 lb. ft. [1843 nM] @ 1000-1300 RPM
MP7-345C	345 HP [257kW] @ 1400-1700 RPM 1360 lb. ft. [1843 nM] @ 1000-1300 RPM
MP7-365C	365 HP [272kW] @ 1400-1700 RPM 1460 lb. ft. [1980nM] @ 1000-1300 RPM
MP7-395C	395 HP [295Kw] @ 1450-1700 RPM 1560 lb. ft. [2115 Nm] @ 1050-1300
MP7-395A	395 HP [295kW] @ 1450-1700 RPM 1560 lb. ft. [2115 nM] @ 1050-1300 RPM
MP7-425E	425 HP [317kW] @ 1550-1800 RPM 1560 lb. ft. [2115 nM] @ 1050-1200 RPM
MP7-425SE	425 HP [317kW] @ 1500-1800 RPM 1560 lb. ft [2115nM] @ 1050-1200 RPM

MP8 ENGINES

MODEL	HORSEPOWER / TORQUE
MP8-415C	415 HP [309kW] @ 1400-1700 RPM 1660 lb. ft. [2251 Nm] @ 1050-1300 RPM
MP8-445C	445 HP [332kW] @ 1300-1800 RPM 1815 lb. ft. [2460 nM] @ 1150-1300 RPM
MP8-505C	505 HP [377 kW] @ 1500-1700 RPM 1860 lb. ft. [2508nM] @ 1100-1400 RPM
MP8-415E	415 HP [310kW] @1400-1700 RPM 1660 lb. ft. [2251 nM] @ 1000-1300 RPM
MP8-445E	455 HP [339kW] @ 1300-1700 RPM 1815 lb. ft. [2460 nM] @ 1100-1300 RPM
MP8-505E	505 HP [377kW] @ 1400-1700 RPM 1860 lb. ft. [2508nM] @ 1100-1400 RPM
MP8-505A	505 HP [377 kW] @ 1500-1700 RPM 1860 lb. ft. [2508nM] @ 1100-1400 RPM
MP8-415SE - TC	415 HP [310 kW] @ 1300-1700 RPM 1760 lb. ft. [2386] @ 900-1300 RPM
MP8-445SE - TC	445 HP [332 Kw] @1400-1700 RPM 1860 lb. ft. [2432 kW] @ 900-1300 RPM

MACK TRANSMISSIONS

MODEL	SPEEDS	RATIOS	LOW/HIGH
T309	9	11.40 / 0.71	
T310	10	13.81 / 0.73	
T310M	10	17.35 / 0.73	
T313	13	13.44 / 0.74	
T31321	13	13.44 / 0.71	
T313LR	13	16.42 / 0.71	
T313LR21	13	16.42 / 0.71	
T318	18	13.44 / 0.71	
T318LR	18	16.42 / 0.71	
T31821	18	13.44 / 0.71	
T318LR21	18	16.42 / 0.71	

MACK *m* DRIVE TRANSMISSIONS

MODEL	SPEEDS	F. RATIOS	R. RATIOS
TmD12AFD	12	14.94 / 1.00	17.49 / 13.73
TmD12AFO	12	11.73 / 0.785	13.73 / 10.78
TmD12AFD-HD	12	14.94 / 1.00	17.49 / 13.73
TmD12AFO-HD	12	11.73 / 0.785	13.73 / 10.78
TmD13AFD-HD	13	19.34 / 1.00	37.49 / 8.62
TmD13AFO-HD	13	17.54 / 0.785	20.53 / 10.78
TmD14AFO-HD	14	32.04 / 0.785	37.49 / 8.62

EATON FULLER TRANSMISSIONS

MODEL	SPEEDS	RATIOS	LOW/HIGH
FA14810B	10	15.42 / 1.00	
FA15810B	10	15.42 / 1.00	
FAM15810B	10	15.42 / 1.00	
FAO14810C	10	12.80 / 0.73	
FAO15810C	10	12.80 / 0.73	
FAO16810C	10	12.80 / 0.73	
FAOM15810C	10	12.80 / 0.73	
FAOM16810C	10	12.80 / 0.73	
FR15210B	10	14.80 / 1.00	
FRO14210C	10	12.69 / 0.74	
FRO15210C	10	12.69 / 0.74	
FRO16210C	10	12.69 / 0.74	
FRO17210C	10	12.94 / 0.74	
FRO18210C	10	12.94 / 0.74	
FRW15210B	10	16.21 / 1.00	
RTO14908LL	10	14.56 / 0.74	
RTO16908LL	10	14.56 / 0.74	
RTLO16913A	13	12.31 / 0.73	
RTLO18913A	13	12.31 / 0.73	
RTO16915	15	13.31 / 0.79	
RTLO16918B	18	14.40 / 0.73	
RTLO18918B	18	14.40 / 0.73	

ALLISON TRANSMISSIONS

MODEL	SPEEDS	RATIOS	LOW/HIGH
3000-RDS	5	3.49 / 0.75	
3000-RDS	6	3.49 / 0.65	
4000-RDS	6	3.51 / 0.64	
4500 RDS	5	4.70 / .076	
4500 RDS	6	4.70 / .067	

AVAILABLE DRIVELINE COMPONENTS CONTINUED

FRONT AXLES		
MODEL	MAKE	CAPACITY
FXL12	MACK	12,000 lb. [5443 kg.]
E1252IR	DANA SPICER	
MFS131	MERITOR	
STEERTEK	HENDRICKSON	
FXL12.5	MACK	12,500 lb. [5681 kg.]
E1252IR	DANA SPICER	
MFS131	MERITOR	
STEERTEK	HENDRICKSON	
FXL13.2	MACK	13,200 lb. [6000 kg.]
E1322IL	DANA SPICER	
MFS131	MERITOR	
STEERTEK	HENDRICKSON	
FXL14.6	MACK	14,600 lb. [6486 kg.]
MFS141	MERITOR	
STEERTEK	HENDRICKSON	

REAR AXLES - TANDEM		
MODEL	MAKE	CAPACITY
S38R	MACK	38,000 lb. [17,237 kg.]
S40	MACK	40,000 lb. [18,100 kg.]
S402R	MACK	
MT-40-14X4C	MERITOR	
MT-40-14X4D	MERITOR	
RT40-145A	MERITOR	
DS405	DANA SPICER	
D40-155	DANA SPICER	
D40-156	DANA SPICER	
D40-155H	DANA SPICER	
D40-156H	DANA SPICER	
S440	MACK	44,000 lb. [19,958 kg.]
S460	MACK	46,000 lb. [20,886 kg.]
S462	MACK	
S462R	MACK	
RT46-160	MERITOR	
RT46-164EH	MERITOR	
D46-170	DANA SPICER	



MACK

CHU613



**BIGGER
THAN IRON**

STANDARD POWERTRAIN SPECIFICATIONS

ENGINE: MACK MP8-415C

- Peak Horsepower – 415HP at 1500-1700 RPM
- Horsepower – 368 HP at 1950 Gov. RPM
- Max. Torque – 1660 lb/ft at 1100-1300 RPM
- V-MAC IV – Total Vehicle Electronics
- Air Compressor – 318 (18.7 cfm)
- Air Cleaner – 11" Single Element
- Alternator – Delco 12V 130A (24SI)
- Batteries – (3) Mack 12V 650/1950 CCA Threaded Stub Type
- Coolant Protection, -34°F (-37°C)
- Mack Coolant Conditioner
- Diesel Particulate Filter – RH Side Under Cab
- Exhaust After Treatment System – Ceramic
- Mack PowerLeash™ Engine Brake
- Silicone Engine Hoses and Tubing
- Poly-V Fan Belt w/ Automatic Tensioner
- Fan Drive – Electronically Modulated Multi-Speed Viscous
- Flywheel Housing – Aluminum (Lightweight)
- Fuel Water Separator w/ Manual Drain
- Mack EPDM Radiator & Heater Hoses
- Radiator – Aluminum Core
- Starter – Delco 12V 39MT
- Electronic Starter Interlock

TRANSMISSION: MACK *m*DRIVE PREMIUM W/ OVERDRIVE, INCLUDES GRADE GRIPPER AND MACKCELLERATOR

- 12-Speed, Ratios: 11.73 Low – 0.78 High
- Clutch – Meritor/Sachs, Single Plate 17" Organic Material
- Transmission Bell Housing – Aluminum
- Transmission Oil Cooler – *m*DRIVE Gear Box Mounted LH Side Water to Oil Cooler
- Main Driveline – Spicer Extended Lube Series
- Interaxle Driveline – Spicer "Life Series"

REAR AXLE: MERITOR MT-40-14X (AMBOID TYPE GEARING)

- 40,000 lb Capacity
- Suspension – Maxlite 40EZ Air Suspension 40,000 lb Rating
- Tires – 295/75R 22.5 (Low Profile)
- Carrier – Malleable Housing
- Wheels – Aluminum Disc (8) 22.5" x 8.25" 10-Hole Hub Piloted
- Hub Material – Aluminum Pre Set w/ Integrated Spindle Nut
- Brakes – Bendix ES165-07D 16.5" x 7" Stamped Spider
- Brake Drums – Cast Outboard Mounted
- Rear Wheel Seals – Premium Hub Oil
- Shock Absorbers – (4) Mounted on Forward and Rear Axles
- Slack Adjusters – Automatic
- Spring Brake Chambers – (2) 30/30 Double Diaphragm Type/Mechanical Spring Release

FRONT AXLE: MACK FXL12

- 12,000 lb. Capacity
- Tires – 295/75R 22.5 (Low Profile)
- Wheels – Aluminum Disc (2) 22.5" x 8.25" 10-Hole Hub Piloted
- Hub Material – Aluminum
- Brakes – Bendix ES165-05D 15" x 5" Cast Spider
- Brake Drums – Cast Outboard Mounted
- Front Brake Lining
- Front Wheel Seals – Integrated
- Shock Absorbers – Double Acting Type
- Slack Adjusters – Automatic
- Suspension – Mack Taperleaf 12,000 lb. Ground Load Rating (2 Leaf Spring)
- Steering – THP60 TRW-PWR (Integral)

STANDARD CAB INTERIOR/EXTERIOR SPECIFICATIONS

CAB: CA68 CONVENTIONAL

- Air Conditioner w/ Integral Heater -2 R134a Refrigerant
- Ash Tray
- Cab Mounting – Four Point System w/2 Air Bags and Shocks at Rear
- Cigar Lighter
- Coat Hook
- Co-Pilot Enhanced Driver Display with Button and Stalk Control and GuardDog Maintenance System
- Cup Holders, Driver's & Rider's Side
- Dome Lights – 2 Lamps LH/2 Lamps RH Galvanized
- Steel Visibility Doors
- Lower PanelDoor Trim – Molded Upper Door
- Panel & Padded Engine Shutoff – Key Type
- Floor Mats – Mack Signature Polyurethane
- Digital Voltmeter, Digital Ambient Air Temp
- Gauges – Air Pressure, Engine Coolant Temperature, Engine Oil Pressure, Engine Oil Temperature, Speedometer, Tachometer, Fuel Level
- Gauge Cluster – Exhaust Pyrometer & Transmission Oil Temperature Gauges
- Grab Handles – Bright Finish RH & LH Behind Door
- Grille – Bright Finish Bars w/ Bright Finish Surround
- Hood & Fenders – 2 One Piece Insulated Fiberglass w/ Wheel Splash Aprons, Forward tilt 75o
- Horn – Mack Rectangular Single Trumpet Air Horn, Single Tone w/ Snow Shield
- Identification and Clearance Lights (5)
- Instrument Panel – Charcoal Gray
- Interior Trim: Genuine – Slate Gray
- Keys – (2) Keyed at Random
- Low Air Pressure Indicator Light and Buzzer
- Body Colored Aero Exterior Mirrors
- Overhead Console – 3 Storage Compartments w/ Nets
- Parking Brake On Indicator Light
- AM/FM Premium Stereo CD, Weather Band, MP3, Hands Free Interface and Bluetooth
- CB – 5 way Binding Post
- Driver Seat – Bostrom Talladega 915 Mid-Back Air Suspension
- Rider Seat – Mack Fixed Mid-Back Non-suspension
- Seat Belts – Lap and Shoulder w/ Cab Mounted Shoulder Belt
- Side Markers – Lamps and Reflectors
- Key Type Starter Switch
- Steering Column – Adjustable Tilt Telescope
- Steering Wheel – Two Spoke Urethane Grip Painted Spokes & Bulldog Horn Cap
- Rear Storage Pouch
- Interior Sun Visor Both Sides w/ Ticket Holder
- Turn Signals – Front Integral w/ Fender
- RH Door Peep Window
- Window Control – Hand Crank Operation
- Windshield – Safety Tinted 2 Piece
- Side and Rear Windows – Safety Tinted
- Windshield Washers – Electric Wiper Mounted w/ Reservoir Mounted under Hood
- Windshield Wipers – 2 Speed Electric Motor w/ Intermittent Feature
- Paint Color – Mack White (Cab, Hood & Fenders), Mack Black (Chassis Running Gear)

ADDITIONAL STANDARD SPECIFICATIONS

AIR/BRAKE

- Dual Air Brake System
- Air Dryer – 1200P w/ Coalescing Filter
- Air Reservoirs – Steel 5961 in3 Capacity
- Mack Road Stability Advantage System
- Parking Brake Control – 2 Valve System, Trailer Supply and Tractor-Trailer Park
- Electrical Plug Holder (Includes Glad Hand Storage)
- Hand Control Valve for Trailer Brakes
- Hose Tender – Pogo Stick, Chassis Mounted
- Manual Drain Valve – Lanyard Control on Supply Tank
- Trailer Connection Package – Semi
- Trailer Air Hoses & Electrical Cord – 12' Non-coiled Type
- Trailer Receptacle – (7) Wire Mounted on Back of Cab

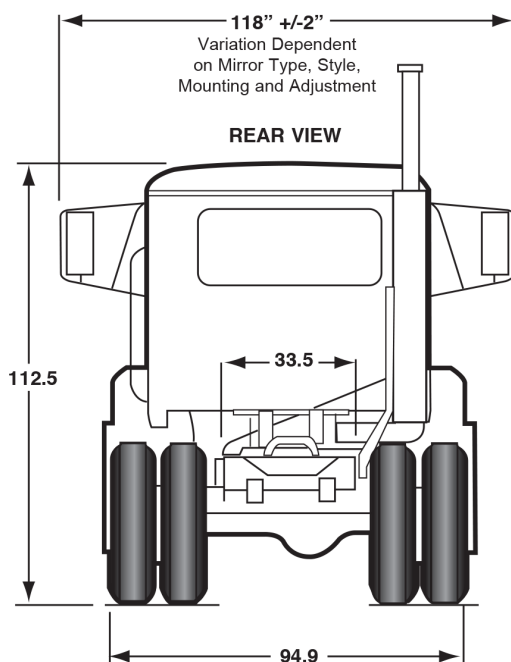
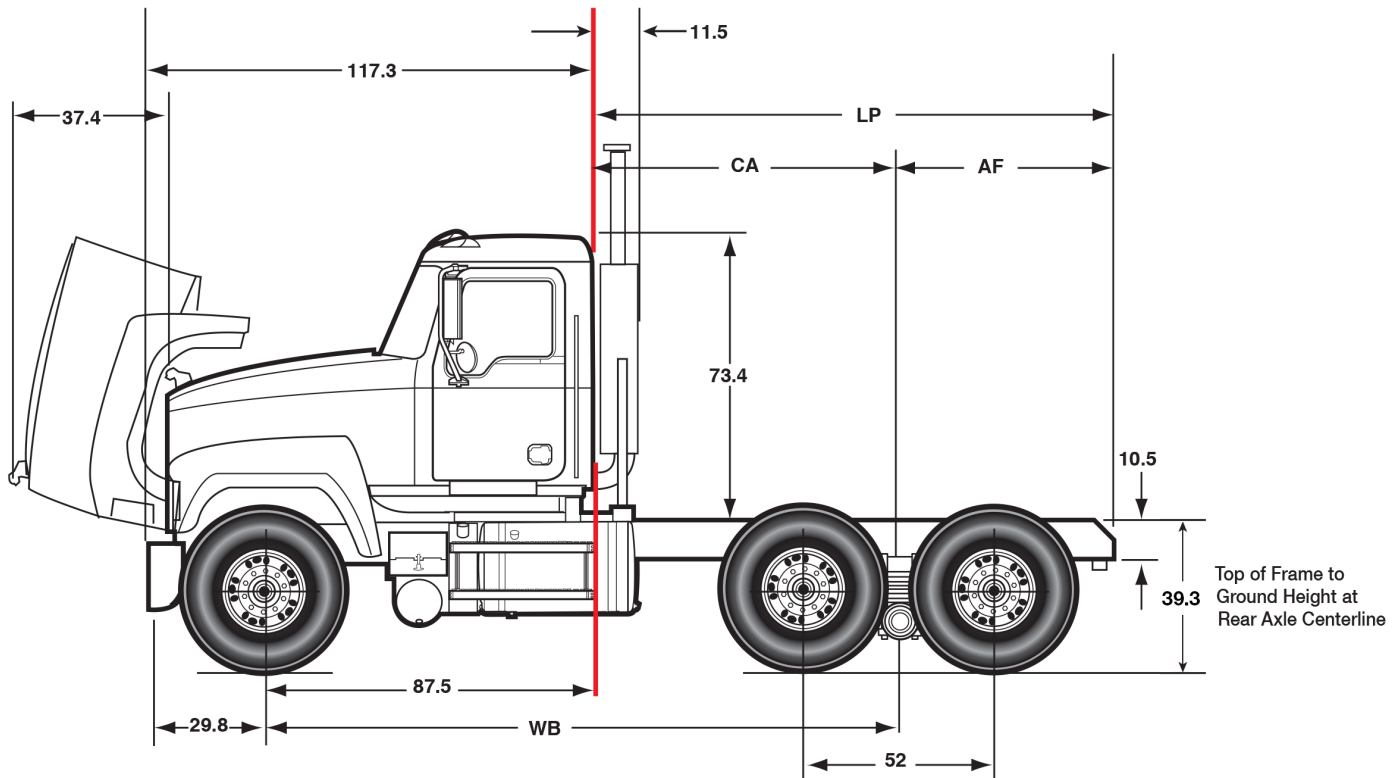
ELECTRICAL

- 12 Volt Electrical System
- Battery Box – Steel w/ Molded Plastic Cover Mounted LH Side
- Courtesy Light Switch – Headlamp and Clearance
- Daytime Running Lights
- GuardDog Connect Diagnostics with 3G and WLAN System
- Triples Trailer
- Electrical Package with 30amp Breaker Electric Circuit Protection Package
- Waterproof Electrical Connections
- Headlights – Single Flush Mtd. Rectangular Halogen Lamps
- Rear Lighting – (2) Combination Stop, Tail Directional and Back-Up Lights
- Solid State Turn Signal Flasher

CHU613



STANDARD CHASSIS DIMENSIONS



FRAME EQUIPMENT/FUEL TANKS

- Frame Rail w/out Liner – 10.47" x 3.54" x .24" Steel
- Section Modulus – 11.6 in³
- RBM (per rail) – 1,390,000 lb. in.
- Front Bumper – Stainless Steel Clad Aluminum Flush Mounted
- Bumper to Back of Cab (BBC) – 117"
- Crossmembers – Steel/Rear Crossmembers – Boxed and Tapered
- Fifth Wheel – Air Slide LH Release, Bolt to Outboard Mtg. Angles
- Tapered and Flanged Rail Ends – 28°
- Front Tow Device – (2) Clevis
- Fuel Tanks – 93 Gallon LH & RH, 26" dia. Aluminum
- Fuel Lines – Dual Draw & Return, Material – Nylon Tube
- Diesel Exhaust Fluid (DEF) Tank - 18.4 Gallon, 26" Diameter Frame Mounted on Left Side with Painted Cover

STANDARD WHEELBASE/LOAD PLATFORM

For standard wheelbase and load platform information refer to your current version of MACKTRAQ

AVAILABLE DRIVELINE COMPONENTS

MACK 300 SERIES TRANSMISSIONS

MODEL	SPEEDS	RATIOS <small>(LOW-HIGH)</small>
T306G	6	7.50 / 0.71
T309	9	11.40 / 0.71
T309LR	9	13.93 / 0.71
T310	10	13.81 / 0.73
T310M	10	17.35 / 0.73
T310ME	10	17.35 / 0.73
T310ME21	10	17.35 / 0.73
T313	13	13.44 / 0.74
T31321	13	13.44 / 0.71
T313LR21	13	16.42 / 0.71
T313LR	13	16.42 / 0.71
T318	18	13.44 / 0.71
T31821	18	13.44 / 0.71
T318LR21	18	16.42 / 0.71
T318LR	18	16.42 / 0.71

MACK *m*DRIVE TRANSMISSIONS

MODEL	SPEEDS	RATIOS <small>(LOW-HIGH)</small>
TmD12AD	12	14.94 / 1.00
TmD12AO	12	11.73 / 0.78

EATON FULLER TRANSMISSIONS

MODEL	SPEEDS	RATIOS <small>(LOW-HIGH)</small>
RTX-16709B	9	12.46 / 0.73
FRO-15210B	10	11.06 / 0.75
FRO-15210C	10	12.69 / 0.74
FRO-16210B	10	11.06 / 0.75
FRO-16210C	10	12.69 / 0.74
FRO-18210C	10	12.94 / 0.74
RTO-16908LL	10	14.56 / 0.74
RTLO-16913A	13	12.31 / 0.73
RTLO-18913A	13	12.31 / 0.73
RTLO-20913A	13	12.31 / 0.73
RTO-16915	15	13.31 / 0.79
RTLO-16918B	18	14.40 / 0.73
RTLO-18918B	18	14.40 / 0.73
RTLO-20918B	18	14.40 / 0.73

ALLISON TRANSMISSIONS

MODEL	SPEEDS	RATIOS <small>(LOW-HIGH)</small>
4000-HS	5	3.51 / 0.74
4500-HS	5	4.70 / 0.76
4000-RDS	5	3.51 / 0.74
4500-RDS	5	4.70 / 0.76
4000-HS	6	3.51 / 0.64
4500-HS	6	4.70 / 0.67
4000-RDS	6	3.51 / 0.64
4500-RDS	6	4.70 / 0.64

MP8 ENGINES

MODEL	HORSEPOWER
MP8-415E	415 HP [310 kW] @ 1500-1700 RPM 375 HP [280 kW] @ 1800
MP8-445E	445 HP [329 kW] @ 1500-1700 RPM 400 HP [296 kW] @ 1800
MP8-505E	505 HP [377 kW] @ 1500-1700 RPM 430 HP [318 kW] @ 1800
MP8-415C	415 HP [309 kW] @ 1500-1700 RPM 390 HP [291 kW] @ 1950
MP8-445C	445 HP [332 kW] @ 1500-1700 RPM 420 HP [314 kW] @ 1950
MP8-505C	505 HP [377 kW] @ 1500-1700 RPM 430 HP [321 kW] @ 1950
MP8-505C+	505 HP [377 kW] @ 1500-1700 RPM 430 HP [318 kW] @ 1950

AVAILABLE DRIVELINE COMPONENTS CONTINUED

FRONT AXLES		
CAPACITY	MAKE	MODEL
12,000 lb. [5443 kg]	MACK	FXL12
	DANA SPICER	E12021-LMS
	MERITOR	MFS-12E
14,600 lb. [6623 kg]	MACK	FXL14.6
	MERITOR	MFS-141

REAR AXLES			
CAPACITY	MAKE	MODEL	
38,000 lb. [17237 kg]	MACK	S38R	
	MACK DANA SPICER DANA SPICER	S40/S402R DS405(P) DST40(P)/41(P)	
40,000 lb. [18144 kg]	MERITOR	MT40-14X4C	
	MERITOR	MT40-14X4D	
	MERITOR	RT40-145A	
	MACK	S440	
44,000 lb. [19958 kg]	MACK	S440	
	MACK MERITOR DANA SPICER DANA SPICER	S440-46/S462/S462R RT46-160 RT46-164EH D46-170P	
	46,000 lb. [20866 kg]	MERITOR	RT46-160
	DANA SPICER	RT46-164EH	
DANA SPICER	D46-170P		